



**TO:** (CLFLWD) Board of Managers

**DATE:** May 21, 2026

**RE:** Administrator's Report for the May 28, 2026, Regular Board Meeting

### Administration (1000 series)

- 1001 – Board Administration
  - The Board held a special meeting on May 12th to discuss priorities for the 2027 annual budget. Budget Workshop #2 is scheduled for Tuesday, June 2, 6–8 pm.
  - The 2026 Minnesota Watersheds Summer Tour will be hosted in Detroit Lakes August 25–26. The Summer Tour provides the host watershed district(s) or watershed management organization(s) with the opportunity to showcase their watershed management efforts. It also provides members with the chance to visit other areas of the state to learn about watershed work from flood control and drainage to water quality and more.
- 1003 – General Administration
  - The District submitted its 2025 Annual Audit, to the Office of the State Auditor (OSA) by the April 30th deadline.
  - The District office will be closed Monday, May 25<sup>th</sup>, in observance of Memorial Day.
  - Reminder that Juneteenth is a federal and state holiday that is observed by the District. The District office will be closed on Friday, June 19<sup>th</sup> in observance of this holiday.

### Programs (3000 series)

- 3002 – Permitting
  - Between April 11, 2026, and May 20, 2026, the following activity took place:
  - 123 site inspections performed with a 94.47% compliance rate.
  - Six permit applications were received
  - Nine permits were activated
  - Two permits were conditionally approved (Havenwood and Amberly Woods)
  - Four permits were closed out

Active Permits			
Permit Number	Permit Name	Address	Rules
20-011	Cavalry Cemetery	4647 232nd St	3.0, 9.0
20-025	Forest Hills Farm Development	10161 North Shore Tr N	2.0, 3.0, 4.0, 9.0, 10.0
21-005	Heims Lake Villas II	25409 H Lake Cie	2.0, 3.0, 4.0, 9.0
22-008	Haaq-Emerson SFH	24677 Morgan Ave	3.0, 9.0
22-039	Miller SFH	North of 13351 Oakhill Road N	3.0, 9.0
22-040	CSAH 33 Improvements	CSAH 33 between Broadway Ave & 11th Ave SW	2.0, 3.0, 6.0
22-041-T	Katies Glen Transfer	East Side of Goodview Ave. at its intersection with Glen Oak	2.0, 3.0, 4.0, 9.0, 10.0
22-043	Rolling Acres 61	SE of intersection of 199th and Keystone	2.0, 3.0, 4.0, 9.0, 10.0
22-043-P1	Block 3, Lot 1- Rolling Acres 61	SE of intersection of 199th and Keystone	3.0, 9.0
22-043-P3	Block 1, Lot 1 Rolling Acres 61	10350 198th St. N	3.0
23-003	McGrath SFH	N of 7460 N Shore Circle	3.0, 9.0
23-009	Downtown FL Stormwater BMPs	N. Shore Trail N from Hayward Ave N to 233rd Street N	3.0
23-010	Ingersoll Subdivision	East across the road from 20810 Ingersoll	2.0, 3.0, 4.0, 9.0, 10.0
23-010-P1	Ingersoll Lot 4	20805 Ingersoll Ave N	3.0, 9.0
23-020	Erickson Shop	13263 240th St N	3.0, 9.0
23-030	Tempo Homes	7880 Scandia Trail	3.0, 9.0
24-006	Larson Addition	1099 17th St SE	3.0, 9.0
24-007	Chase Bank	1232 W Broadway Ave	2.0, 3.0, 9.0
24-008	Jeans Garage	8535 215th St. N	3.0, 9.0
24-010	Vicki & Chris SFH	21577 Novak Ave N	3.0, 9.0
24-013	Gaiovnik Subdivision	East of 7902 N. Shore Tr	3.0, 4.0, 9.0
24-014	Parenteau SFH	20460 Jewel Ave	3.0, 9.0
24-016	Ingersoll Lot 3	20859 Ingersoll Ave N	2.0, 3.0, 9.0
24-021	9879 206th St N	9879 206th St N	3.0, 9.0
24-023	Dalbec SFH	21320 Manning Trail N	3.0, 9.0
24-024	Ziegler SFH	228th St.	3.0, 9.0
24-028	McPhee Garage	7710 235th Street N.	3.0, 9.0
24-029	Freemore Residence	Lot 1 Aadland Shores (PID 21.10765.00)	3.0, 9.0
24-031	Koch Addition	21935 Iden Ave Circle N	3.0, 9.0
24-033	Wetterlund SFH	8239 Pioneer Rd.	3.0, 9.0

24-034	Knippenberg SFH	Next to 880 18th St. SE	3.0, 9.0
24-037	Criego SFH	13566 230th St N	3.0, 9.0
25-004	North Shore Trail Maintenance	North Shore Trail	3.0
25-007	Klehr Residence	2563 255th St.	3.0, 9.0
25-008	Stephens SFH	21015 Juno Ave N	3.0, 9.0
25-009	Forest Lake Sportsmen's Club Berm 2	4480 240th St. N	3.0, 9.0
25-010	Obst Garage	10604 230th St. N.	3.0, 9.0
25-011	Lakeside Veteran's Memorial	95 Broadway Ave	3.0
25-012	LCH Mulberry SFH	257th St.	3.0, 9.0
25-013	Kuschke SFH	8393 200th St. N	3.0, 9.0
25-014	Xcel 2025	Near 24875 Olinda Trail	3.0, 9.0
25-016	Popa SFH	9940 North Shore Trail	3.0, 9.0
25-017	Worcester Home	7451 255th St.	3.0, 9.0
25-018	Gaynor SFH	891 19th St. SE	3.0, 9.0
25-021	Burch SFH	7323 North Shore Trail N.	3.0, 9.0
25-022	Schilling SFH	25930 Comfort Lake Dr.	3.0, 9.0
25-025	Brown SFH	26488 Hunter Ave	3.0, 9.0
25-026	Roche Garage	25516 E Comfort Drive	3.0, 9.0
25-029	Lesnau SFH	24775 Itasca Ave	3.0, 9.0
25-030	Montoya Garage	55 4th Ave NW	3.0, 9.0
26-001	Forest Lake 2026 Street Improvement Project	207th St. Cir, Greystone Ave., Granada Ave. N	3.0
26-002	Dill SFH	23643 Granada Ave. N	3.0, 9.0
26-003	Beltz Park Volleyball	720 11th Ave SE	3.0
26-004	Annunziata SFH	21431 Iverson Ave N.	3.0, 9.0
26-005	Ramirez Garage	25505 E Comfort Dr	3.0, 9.0
26-006	Ambli SFH	7536 North Shore Cir N.	3.0, 9.0
26-007	Hubert SFH	7346 255th St.	3.0, 9.0
26-008	2026 Wyoming Street Project	257th St., Forest Blvd Trl, Forest Blvd Ln, Forest Blvd Cir, Freeport Ave, 258th St., Friesland Ct, Goldfinch Ave	3.0

- 3003 – Monitoring & Data Assessment

- The Forest Lake level logger is currently offline. Staff are working to resolve this issue, and replacement equipment may be needed.
- Staff are continuing efforts with the CAMP lake monitoring program. Week 4 of the monitoring effort was from May 18-22.

- 3004 – Non-Point Source Pollution Abatement (Cost-Share)
  - Staff continue to conduct site visits for residents seeking cost-share or technical assistance.
  - To date, eight cost-share projects have been approved, with two additional applications having been received.
  
- 3005 – Education & Outreach
  - On April 20, EO Coordinator Hjelm, in coordination with Chisago Lakes Area Community Education, put on a community education class focused on landscaping septic systems using native plants. 12 people were in attendance.
  - On April 23, Technician Bussjaeger and Conservation Corps Member Kolb, in coordination with Forest Lake Area Community Education, put on a community education build your own fishing lure activity. 30 adults and kids were in attendance.
  - On April 23, CLFLWD staff Hendrickson, Read, and Eineichner presented at the Comfort Lakes Association annual meeting. ~25 people were in attendance.
  - On April 27, the fourth and final 2026 session in the Watershed Connections lecture series, How Zebra Mussel Populations Affect Mercury Accumulations in Fish, was held at the Forest Lake Senior Center. 16 people were in attendance.
  - On May 11, EO Coordinator Hjelm, in coordination with Hardwood Creek Library, put on a community education class focused on native fruit trees and shrubs. 26 people were in attendance.
  - EO Coordinator Hjelm met several times with the Press Publications staff to provide information for the upcoming Forest Lake Laker publication. The first edition of the Forest Lake Laker is now out in circulation. CLFLWD information is presented in several sections of the publication. It can be found on the Press Publication website at: <https://www.presspubs.com/> Several copies of the Laker publication are also available at the CLFLWD office for anyone to read or pick up.
  - There are several larger CLFLWD education and outreach events coming up in June:
    - North Shore Trail Nature Trail Walk and Talk, June 9, 6:00 – 7:00 p.m.
    - Comfort Lake Delisting Celebration, June 17, 5:30 – 7:30 p.m.
  
- 3006 – Interagency Communication

- The MN Department of Natural Resources conducted a phased, state-wide inventory of public waters. Counties are being assessed in alphabetical order, and Chisago County is currently being assessed. DNR is offering a public comment period from May 18-July 17, as well as a public meeting on June 2 at 6:00 pm, at the Chisago County Government Center, 313 N. Main St., Center City, MN. The DNR's proposed map indicates no changes to public waters in CLFLWD boundaries. District staff concurs with the map as proposed.
- Lower St. Croix Watershed Partnership (LSCWP): Policy Committee next meeting: Monday, July 29. Planning Team next meeting: May 27. Steering Committee last met on May 13 and discussed project requests, mid-point evaluation, and FY27 Watershed Based Implementation Funding grant work plan. Meeting materials are available at <https://www.lscwlp.org/meetings-committees>.
- Partner coordination meetings took place with the cities of Forest Lake, Wyoming, and Scandia on May 6, 12, and 14; respectively.
- 3007 – Research
  - The District will participate in the Sustainable Communities Partnership, which is a St. Thomas program that engages students in experiential learning and creative problem-solving by integrating partner-identified sustainability projects into the St. Thomas curriculum. The objective of the research is to examine the impact of lake proximity and water quality on property values. The purpose of this research is to help people understand the (partial) economic contributions of the lakes through their impact on local property markets. The District will support this effort by providing monitoring data.
- 3008 – Measurement of Progress
  - The District submitted its 2025 Annual Report, along with the Progress Report and Year-in-Review, to the Board of Water and Soil Resources and MN Department of Natural Resources by the April 30<sup>th</sup> deadline. Staff also provided copies of these reports to the BWSR Performance Review & Assistance Program (PRAP) coordinator for reference as part of the District's ongoing PRAP evaluation. The District has provided all required documentation to BWSR, and BWSR staff is working on the PRAP Report. TBD when the report will be brought to the CLFLWD Board.
- 3009 – Grant Research & Preparation

- A detailed summary of active grants, pending grant applications, and in progress grant applications is provided as an attachment to the Administrator's Report.
- MPCA GreenCorps Host Site Application: The District was not selected as a host site for the 2026-2027 GreenCorps season. The MPCA received 107 applications and only has 58 available spots in the program. The District can apply again next spring for the September 2027-August 2028 season.
- District staff communicated with City of Forest Lake and City of Wyoming public works staff to arrange for the cities to apply for free street sweeping sample analysis through a new program through the MN Clean Sweep Program. This program is offered by the University of Minnesota Water Resources Center, Minnesota Sea Grant, and Minnesota Pollution Control Agency. If selected, the cities will receive free testing of swept material, which can be compared to the results estimated using a calculator tool. This will help calibrate and refine our pollutant reduction estimates for enhanced street sweeping.
- District staff continues to work with MPCA on the work plan for our upcoming Section 319 Small Watersheds Focus grant, which should be available in 2027.
- 3010 – Operations & Maintenance
  - Staff continued maintenance of the sand filter beds at the CR50 IESF. Conservation Corps crew will be used to maintain this facility beginning mid-June. Staff are working with the City of Forest Lake to explore the possibility of the city work crew's capacity to assist with this maintenance in the future.
- 3011 – Aquatic Invasive Species Prevention & Management
  - District staff performed the Moody Lake Curly-leaf pondweed (CLP) delineation survey, many of the points sampled had either light projected growth or no growth. No treatment was recommended as there is likely no ecological or recreational threat and we would like to promote native aquatic vegetation growth.
  - On May 13<sup>th</sup>, Lake Management Inc (LMI) performed the scheduled 123.74-acre Forest Lake Curly-leaf pondweed treatment. The DNR allowed Diquat to be utilized for the time period of May 11-15. Note in the future the DNR is considering not using the same walleye fry that are susceptible to Diquat, though this decision will be made in the Fall.
  - The CLFLWD Watercraft Inspection (WCI) Program begin performing inspections May 8<sup>th</sup>. As seasonal staff members continue to join the team, we will continue

working with the public to increase general awareness regarding preventing the spread of AIS. Currently there are 6 hired CLFLWD inspectors along with 1 Conservation Core team member conducting inspections for the District.

- District staff attended a DNR hosted Purple loosestrife beetle collection event for the ongoing Purple loosestrife biocontrol project. Approximately 10 beetles were added to each of the plants that were collected during a Wild Rivers Conservancy hosted event.
- Zebra mussel sampler plates have been distributed to volunteers; sampling protocols have been updated so that it better brings the program into alignment with ongoing monitoring efforts being conducted by MAISRC researchers.
- 3012 – Land Acquisition
  - District staff have reached out to EOR to request a SOW for the level 1 ESA needed to proceed with the Audubon Shallow Lake Parcel. This effort would begin in early July after the Outdoor Heritage Fund grant dollars for the Greenway Corridor program are released to the District.
  - District staff are continuing efforts on the Bone Lake South Nature Area Management Plan. This plan will be reviewed by EOR after Outdoor Heritage Fund grant dollars are available to the District in early July. We anticipate providing a draft management plan for Board review in late summer.
- 3013 – Watershed Planning & Resiliency
  - The Floodplain Resilience Action Plan Framework was discussed at the May 14<sup>th</sup> regular board meeting. The Board directed staff to schedule a workshop for further discussion on the matter. Scheduling is in progress.
  - The 30-day comment period for the Watershed Management Plan (minor) amendment ends May 27<sup>th</sup>. This topic will be brought to the June 11<sup>th</sup> regular board meeting.

### **Projects (5000 series)**

- Bone Lake
  - BLSNA: Olson Fencing LLC began work on the replacement of the Perimeter fence on May 19<sup>th</sup>. The project should be completed within 2.5 weeks.
- Little Comfort Lake

- District Staff, EOR, and legal council are evaluating bids for the Heath Ave Iron enhanced Sand Filter project. A contractor recommendation will be presented to the Board at the June 11<sup>th</sup> Board meeting.
- Forest Lake
  - Staff inspected the North Shore Circle Park shoreline restoration and are coordinating with the contractor for removal of herbivore fencing and replacement of several dead shrubs.
- Comfort Lake
  - East Comfort Pond: Continuing EOR efforts on the feasibility phase of the project. To date, survey work has been completed and nutrient reduction modeling and preliminary design is underway.

# SAVE *the* DATE

2026 Summer Tour  
August 25 - 26

Mark your calendar and stay tuned for more details. We are excited to have you join us in Detroit Lakes this year!



[Holiday Inn, 1155 Hwy 10 East, Detroit Lakes, MN](#)



[mnwatersheds.com/summer-tour](https://mnwatersheds.com/summer-tour)



**MINNESOTA  
WATERSHEDS**  
*Connecting People. Protecting Water.*





Ecological and Water Resources  
500 Lafayette Road  
St. Paul, MN 55155

May 4, 2026

Via Electronic and US Mail

Mike Kinney, Administrator  
Comfort Lake–Forest Lake Watershed District  
44 Lake Street South, Suite A  
Forest Lake, MN 55025  
[michael.kinney@cflwd.org](mailto:michael.kinney@cflwd.org)

**RE: Preliminary Map and List of Public Waters Inventory Corrections Within Chisago County**

Dear Mike Kinney:

The Department of Natural Resources (DNR) has completed a technical review to update the state's Public Water Inventory (PWI) within Chisago County pursuant to Minn. Stat. § 103G.201 (f). The DNR has prepared a map and list of preliminary corrections which will update the PWI for Chisago County. The DNR is proposing a total of 26 public waters corrections including 17 additions and 9 removals in Chisago County.

The map and list of preliminary corrections are enclosed. The enclosed maps include a county map as well as maps for those townships where corrections are proposed. Additionally, the map and list of preliminary corrections can be viewed on the PWI Update project webpage ([mndnr.gov/pwi-update](http://mndnr.gov/pwi-update)).

The DNR will issue a certified mail notice to potentially affected landowners. Each landowner will receive a township map locating the proposed correction(s), a PWI informational flyer, and details about the stakeholder process which are noted below.

The PWI Update stakeholder process

The DNR will provide a 60-day public comment period and host a public meeting in the county to obtain feedback on the preliminary corrections. The comment period closes 30 days after the public meeting.

The public meeting will be held at 6:00pm June 2, 2026 at the Chisago County Government Center, 313 N. Main Street, Center City, MN.

The DNR will accept comments on the preliminary corrections from May 18, 2026 until 4:30 p.m. July 17, 2026. Comments may be submitted online via the public comment tool on the PWI Update project webpage ([mndnr.gov/pwi-update](http://mndnr.gov/pwi-update)). Written comments may be submitted to Public Waters Inventory Update, Minnesota Department of Natural Resources, 500 Lafayette Road, St. Paul, MN 55155-4025, or

[PWI.Update.dnr@state.mn.us](mailto:PWI.Update.dnr@state.mn.us) . Comments cannot be submitted by phone. General questions about the project may be asked by email, postal mail or by calling 651-259-5416.

Useful feedback will be specific to proposed corrections shown on the preliminary map and related statutory definitions of public waters. Feedback not sought by the DNR includes refinements to digital line placement or public water name adjustment. Those data management activities are not a statutory definition error and are not part of the PWI Update scope of work. Feedback on Buffer Law requirements for any new public waters will be accepted only after the finalization of a county's updated map.

To ensure all potential corrections are identified, during the PWI Update public comment period individuals may request the DNR to evaluate a resource as a potential correction. PWI designations cannot be removed or added unless it can be proven to have been in error at the time of designation (late 1970s through early 1980s) and consistently demonstrated throughout time as an error.

Minnesotans that have evidence of an error in the PWI may submit a request for review. A requestor must provide specific evidence demonstrating why the resource in question did, or did not, meet the definition of a public water at the time of the inventory and throughout time.

The following is not considered to be an error in the original inventory: areas initially proposed on the preliminary inventory that were subsequently removed by the DNR as part of the public information meeting process or dropped from or remained on the PWI as part of the petition, hearing, and appeal process.

#### Next Steps

The DNR will review feedback received during the comment period and make necessary modifications to the preliminary map. A revised map, now a provisional final map, will be submitted to the county and made available on the DNR's project webpage.

Please contact me directly by email at [wes.saunders-pearce@state.mn.us](mailto:wes.saunders-pearce@state.mn.us) or by phone at (651) 259-5416 if you would like to arrange a meeting.

Sincerely,



Wes Saunders-Pearce  
Lead Hydrologist, PWI Update Project

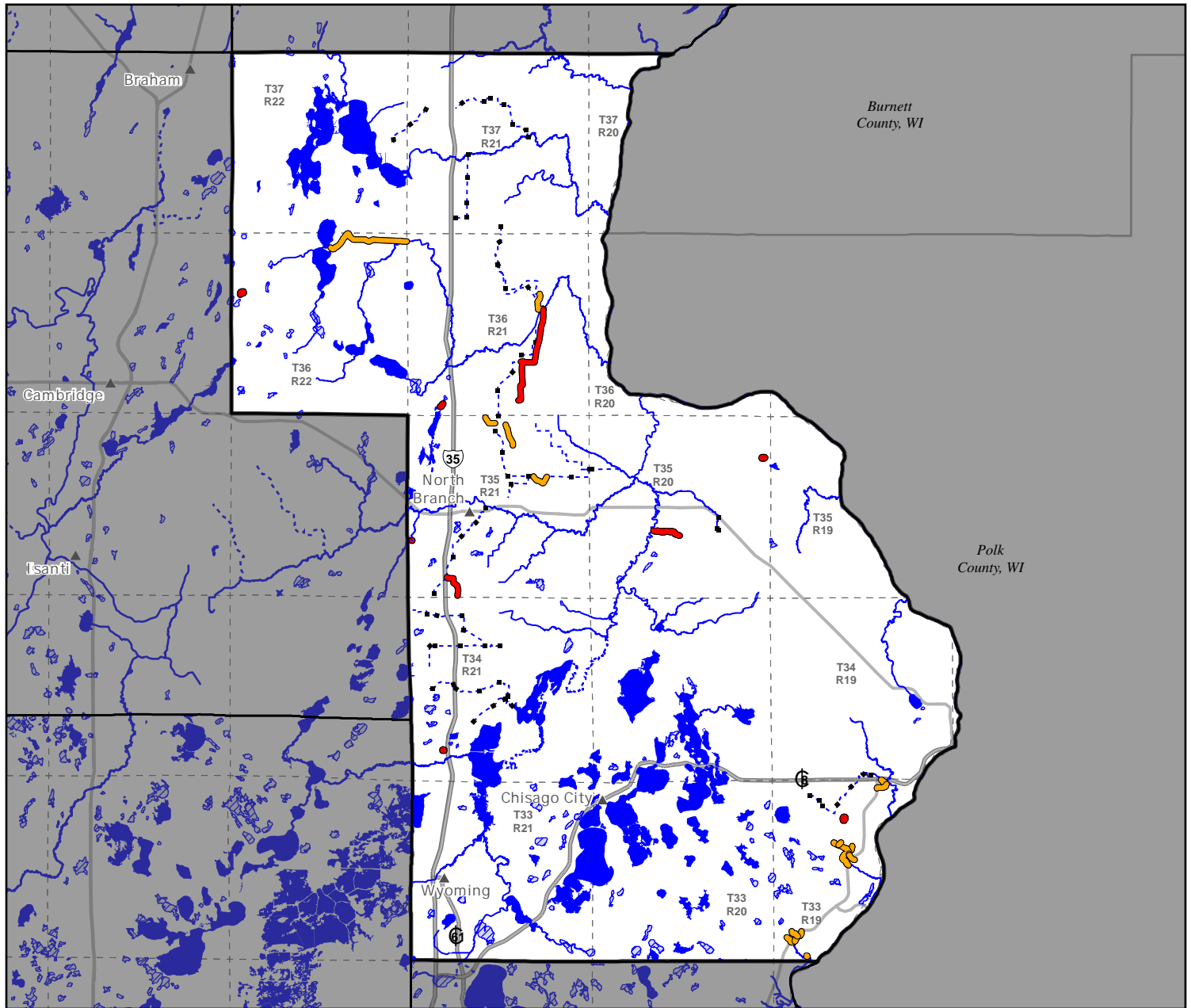
ec: Dan Lais, DNR Regional Manager  
Christine Hokkala-Kuhns, DNR District Manager  
Craig Wills, DNR Area Hydrologist

encl.: Preliminary Map of PWI Corrections  
Preliminary List of PWI Corrections

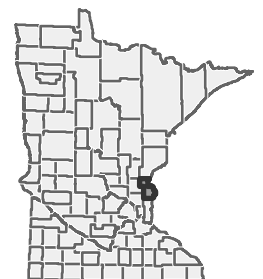
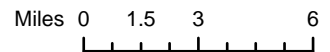
# Public Waters Inventory Preliminary Map of Corrections

## Chisago County

Public waters are defined in Minnesota Statute 103G. The boundaries of public waters shown on this map are drawn as accurately as possible, consistent with the map scale, but are still approximate. Public ditches are only shown where they overlap with public waters.



- |   |                       |                     |
|---|-----------------------|---------------------|
| Public Waters Natural Watercourse         | Public Waters Basin   | Major Cities        |
| Public Waters Altered Natural Watercourse | Public Waters Wetland | Interstate Highways |
| Public Ditch                              | Add (0)               | US Trunk Highways   |
| Preliminary Recommendation                | Remove (6)            | MN Trunk Highways   |
| Add (17)                                  |                       | PLSS Townships      |
| Remove (3)                                |                       |                     |



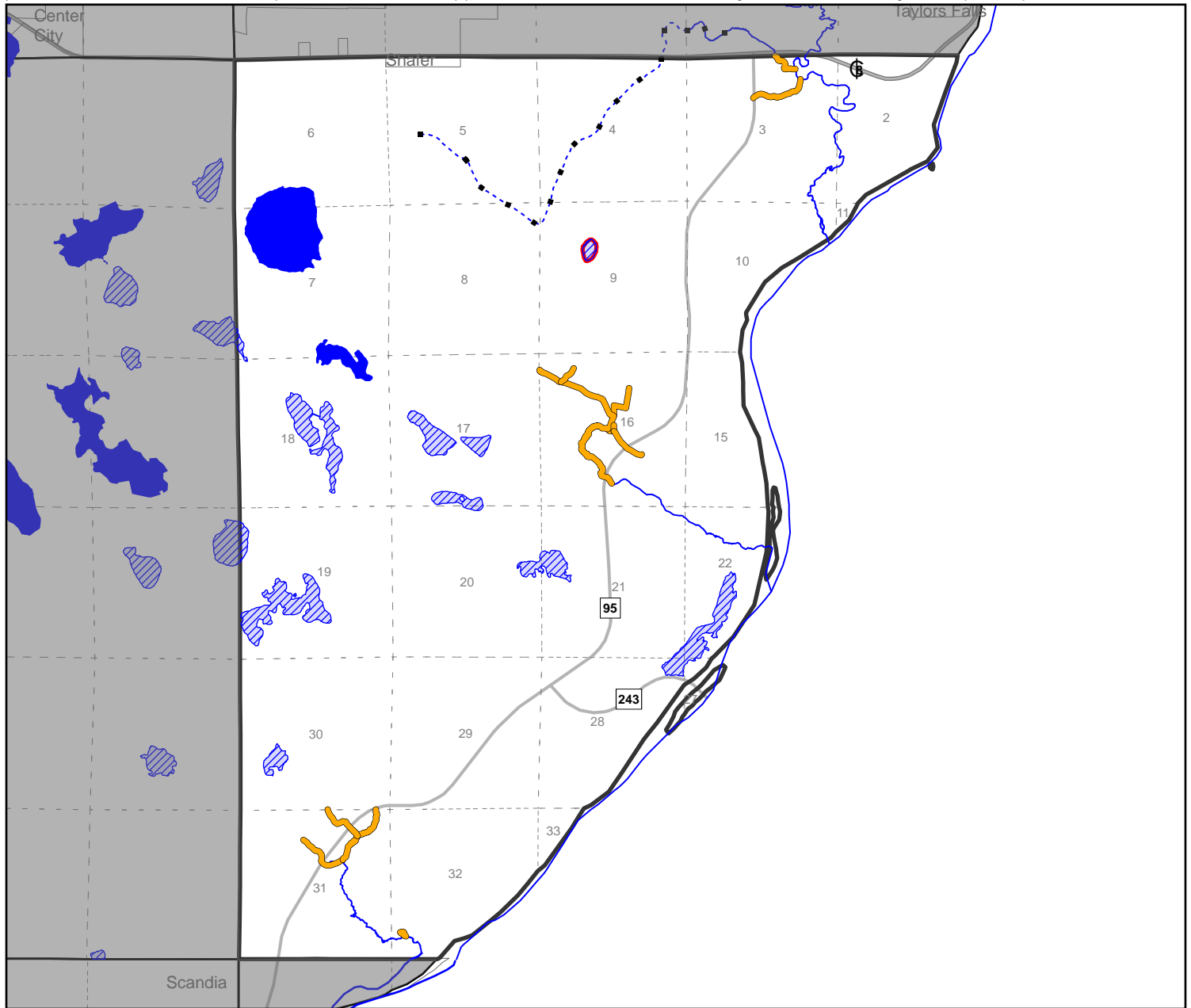
The State of Minnesota, the Minnesota Department of Natural Resources, nor their employees, make any representations or warranties, express or implied, with respect to the use of or reliance on the data provided herewith, regardless of its format or means of transmission. There are no guarantees or representations to the user as to the accuracy, currency, completeness, suitability or reliability of this data for any purpose. THE USER ACCEPTS THE DATA "AS IS" AND ASSUMES ALL RISKS ASSOCIATED WITH ITS USE. The Minnesota Department of Natural Resources assumes no responsibility for actual, consequential, incidental, special or exemplary damages resulting from caused by or associated with, any user's reliance on or use of this data, even if appraised of the likelihood of such damages occurring. All maps and other material provided herein are protected by copyright.



# Public Waters Inventory Preliminary Map of Corrections

# Chisago County T33 R19

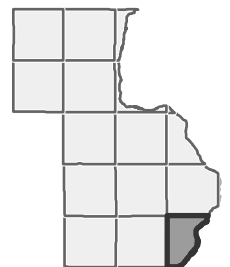
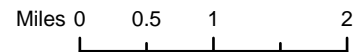
Public waters are defined in Minnesota Statute 103G. The boundaries of public waters shown on this map are drawn as accurately as possible, consistent with the map scale, but are still approximate. Public ditches are only shown where they overlap with public waters.



- Public Waters Natural Watercourse
- - - Public Waters Altered Natural Watercourse
- Public Ditch
- Preliminary Recommendation**
- Add (12)
- Remove (0)

- Public Waters Basin
- Public Waters Wetland
- Preliminary Recommendation**
- Add (0)
- Remove (1)

- US Trunk Highways
- MN Trunk Highways
- City
- PLSS Section



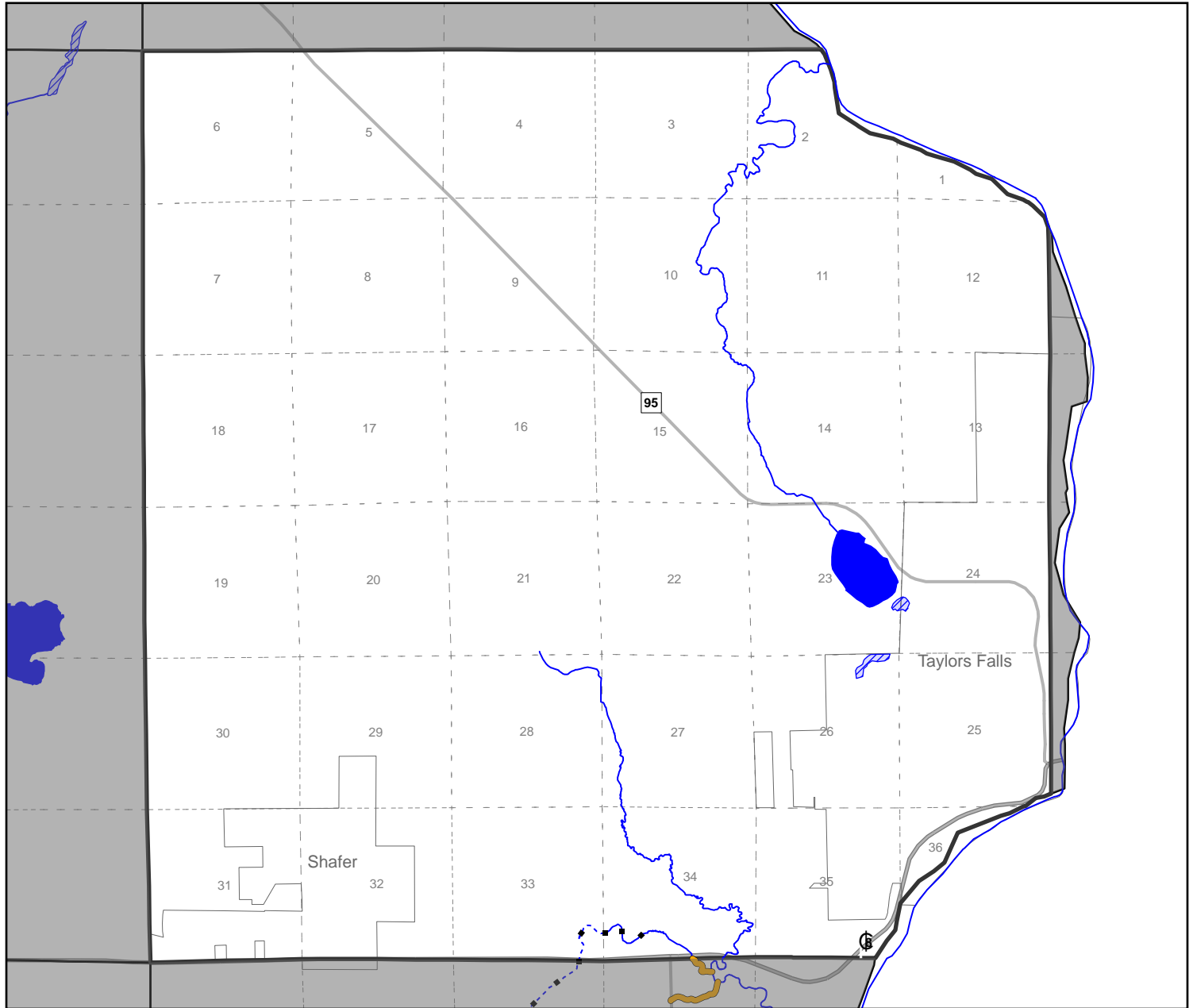
The State of Minnesota, the Minnesota Department of Natural Resources, nor their employees, make any representations or warranties, express or implied, with respect to the use of or reliance on the data provided herewith, regardless of its format or means of transmission. There are no guarantees or representations to the user as to the accuracy, currency, completeness, suitability or reliability of this data for any purpose. THE USER ACCEPTS THE DATA "AS IS" AND ASSUMES ALL RISKS ASSOCIATED WITH ITS USE. The Minnesota Department of Natural Resources assumes no responsibility for actual, consequential, incidental, special or exemplary damages resulting from caused by or associated with, any user's reliance on or use of this data, even if appraised of the likelihood of such damages occurring. All maps and other material provided herein are protected by copyright.



# Public Waters Inventory Preliminary Map of Corrections

# Chisago County T34 R19

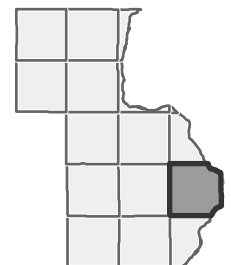
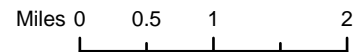
Public waters are defined in Minnesota Statute 103G. The boundaries of public waters shown on this map are drawn as accurately as possible, consistent with the map scale, but are still approximate. Public ditches are only shown where they overlap with public waters.



- Public Waters Natural Watercourse
- Public Waters Altered Natural Watercourse
- Public Ditch
- Preliminary Recommendation**
- Add (1)
- Remove (0)

- Public Waters Basin
- Public Waters Wetland
- Preliminary Recommendation**
- Add (0)
- Remove (0)

- US Trunk Highways
- MN Trunk Highways
- City
- PLSS Section



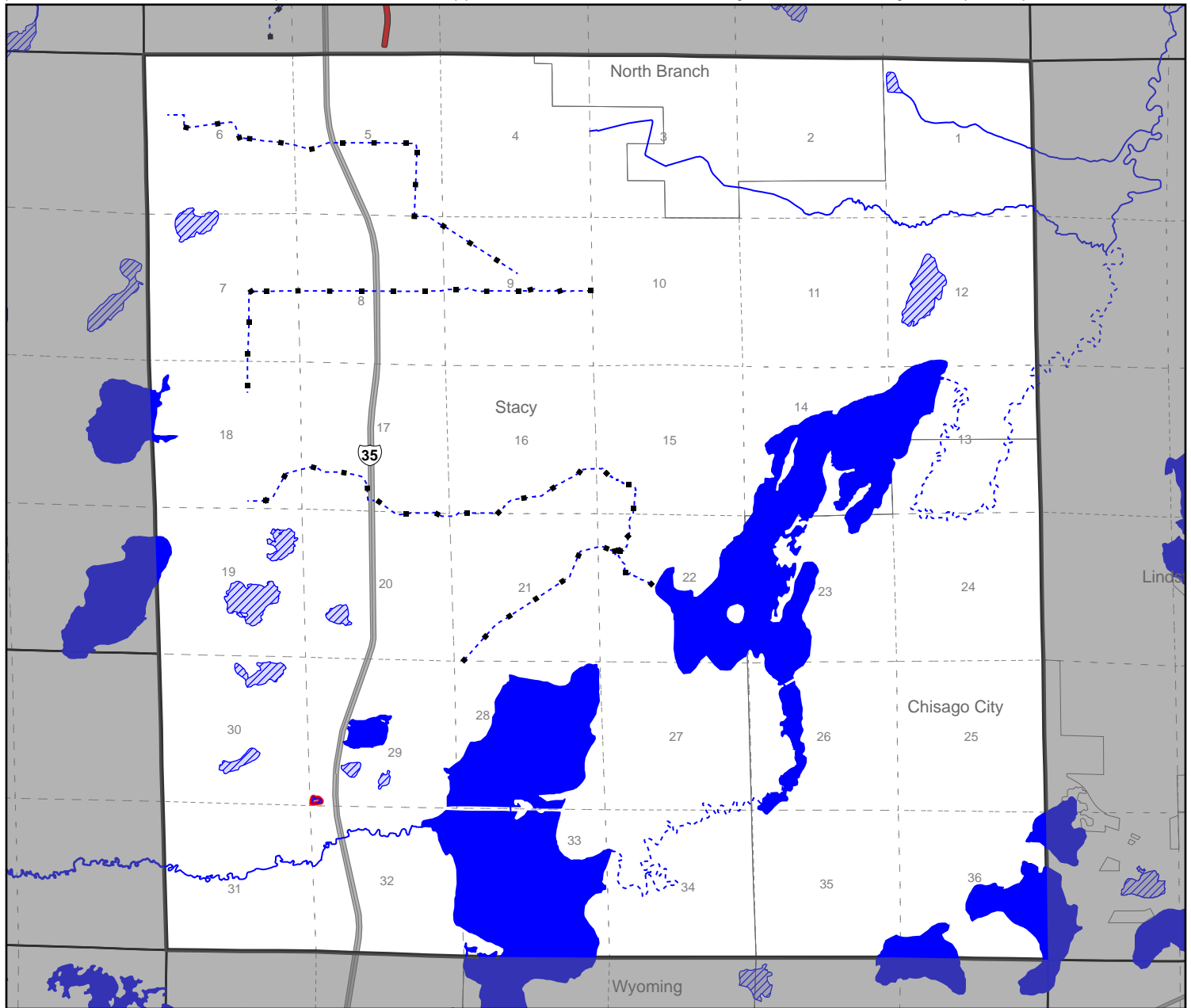
The State of Minnesota, the Minnesota Department of Natural Resources, nor their employees, make any representations or warranties, express or implied, with respect to the use of or reliance on the data provided herewith, regardless of its format or means of transmission. There are no guarantees or representations to the user as to the accuracy, currency, completeness, suitability or reliability of this data for any purpose. THE USER ACCEPTS THE DATA "AS IS" AND ASSUMES ALL RISKS ASSOCIATED WITH ITS USE. The Minnesota Department of Natural Resources assumes no responsibility for actual, consequential, incidental, special or exemplary damages resulting from caused by or associated with, any user's reliance on or use of this data, even if appraised of the likelihood of such damages occurring. All maps and other material provided herein are protected by copyright.



# Public Waters Inventory Preliminary Map of Corrections

# Chisago County T34 R21

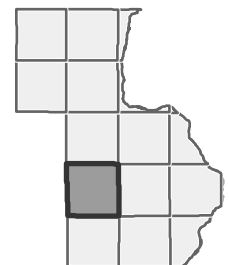
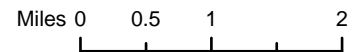
Public waters are defined in Minnesota Statute 103G. The boundaries of public waters shown on this map are drawn as accurately as possible, consistent with the map scale, but are still approximate. Public ditches are only shown where they overlap with public waters.



- Public Waters Natural Watercourse
- Public Waters Altered Natural Watercourse
- Public Ditch
- Preliminary Recommendation**
- Add (0)
- Remove (0)

- Public Waters Basin
- Public Waters Wetland
- Preliminary Recommendation**
- Add (0)
- Remove (1)

- Interstate Highways
- US Trunk Highways
- City
- PLSS Section



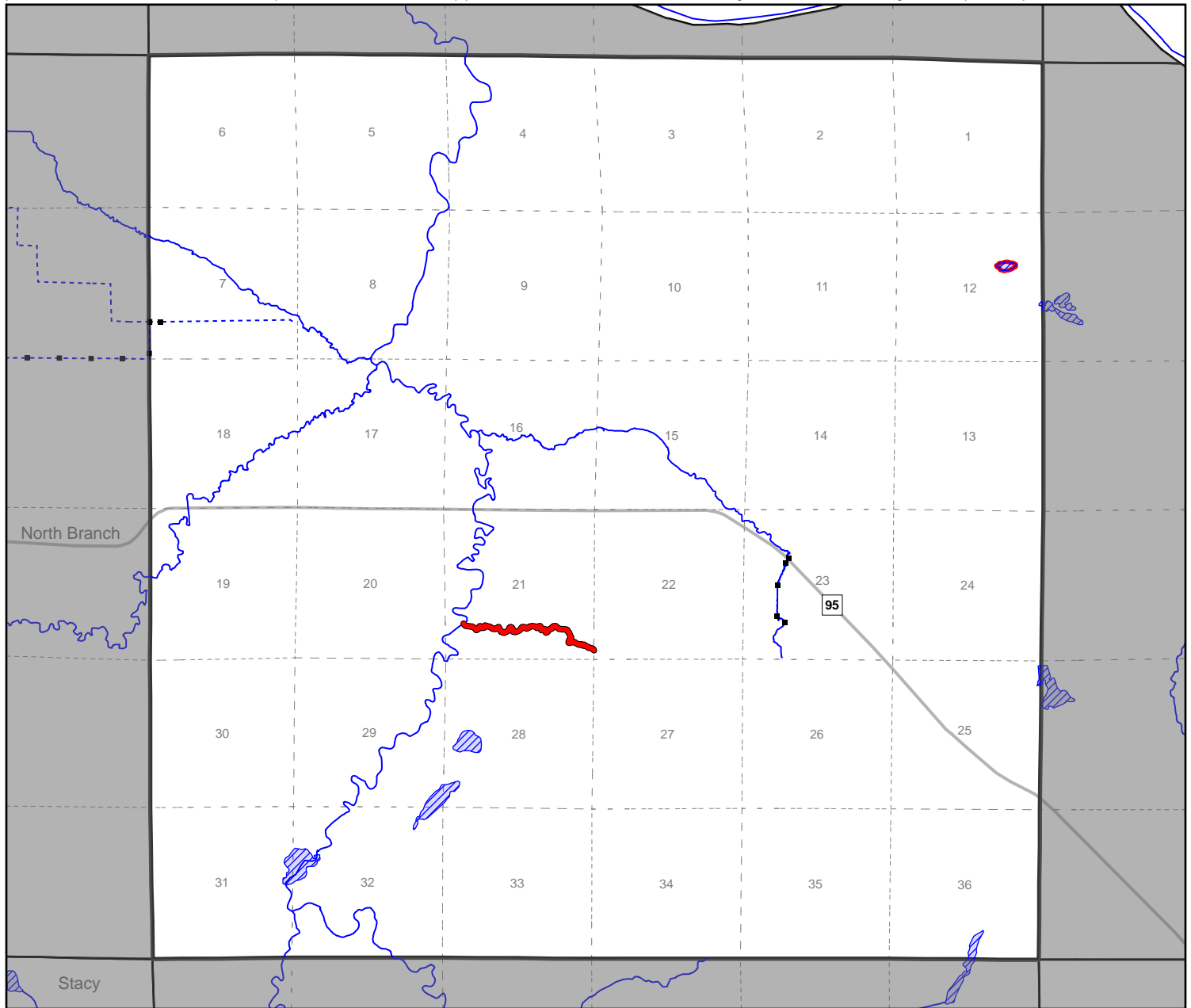
The State of Minnesota, the Minnesota Department of Natural Resources, nor their employees, make any representations or warranties, express or implied, with respect to the use of or reliance on the data provided herewith, regardless of its format or means of transmission. There are no guarantees or representations to the user as to the accuracy, currency, completeness, suitability or reliability of this data for any purpose. THE USER ACCEPTS THE DATA "AS IS" AND ASSUMES ALL RISKS ASSOCIATED WITH ITS USE. The Minnesota Department of Natural Resources assumes no responsibility for actual, consequential, incidental, special or exemplary damages resulting from caused by or associated with, any user's reliance on or use of this data, even if appraised of the likelihood of such damages occurring. All maps and other material provided herein are protected by copyright.



# Public Waters Inventory Preliminary Map of Corrections

# Chisago County T35 R20

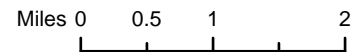
Public waters are defined in Minnesota Statute 103G. The boundaries of public waters shown on this map are drawn as accurately as possible, consistent with the map scale, but are still approximate. Public ditches are only shown where they overlap with public waters.



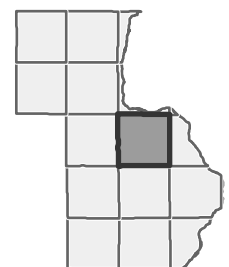
- Public Waters Natural Watercourse
- Public Waters Altered Natural Watercourse
- Public Ditch

- Public Waters Wetland
- Add (0)
- Remove (1)

- MN Trunk Highways
- City
- PLSS Section



- Preliminary Recommendation
- Add (0)
  - Remove (1)



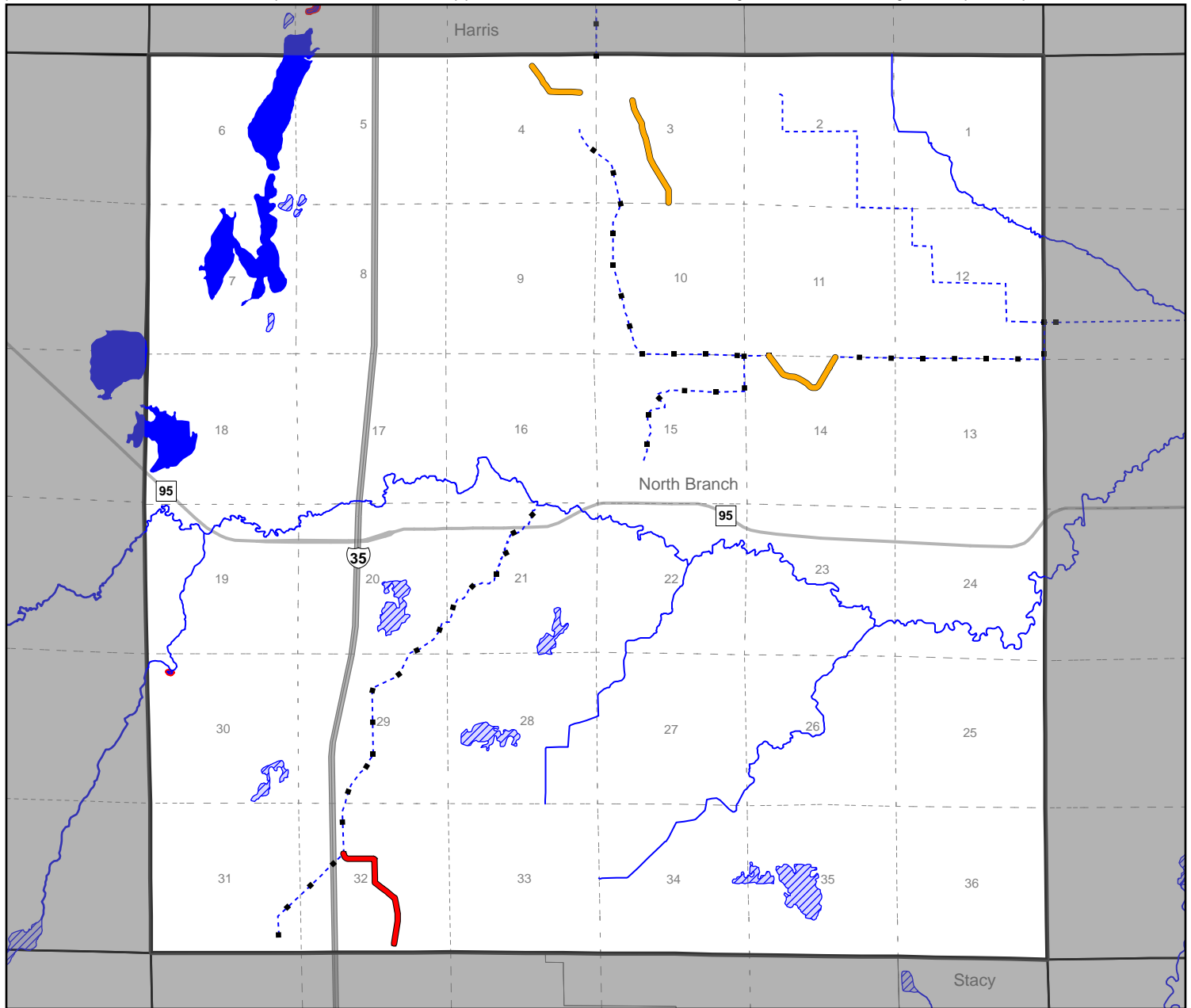
The State of Minnesota, the Minnesota Department of Natural Resources, nor their employees, make any representations or warranties, express or implied, with respect to the use of or reliance on the data provided herewith, regardless of its format or means of transmission. There are no guarantees or representations to the user as to the accuracy, currency, completeness, suitability or reliability of this data for any purpose. THE USER ACCEPTS THE DATA "AS IS" AND ASSUMES ALL RISKS ASSOCIATED WITH ITS USE. The Minnesota Department of Natural Resources assumes no responsibility for actual, consequential, incidental, special or exemplary damages resulting from caused by or associated with, any user's reliance on or use of this data, even if appraised of the likelihood of such damages occurring. All maps and other material provided herein are protected by copyright.



# Public Waters Inventory Preliminary Map of Corrections

# Chisago County T35 R21

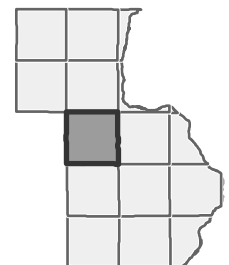
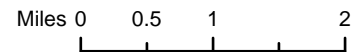
Public waters are defined in Minnesota Statute 103G. The boundaries of public waters shown on this map are drawn as accurately as possible, consistent with the map scale, but are still approximate. Public ditches are only shown where they overlap with public waters.



- Public Waters Natural Watercourse
- - - Public Waters Altered Natural Watercourse
- ■ Public Ditch
- Preliminary Recommendation Add (3)
- Preliminary Recommendation Remove (1)

- Public Waters Basin
- Public Waters Wetland
- Add (0)
- Remove (1)

- Interstate Highways
- MN Trunk Highways
- City
- PLSS Section



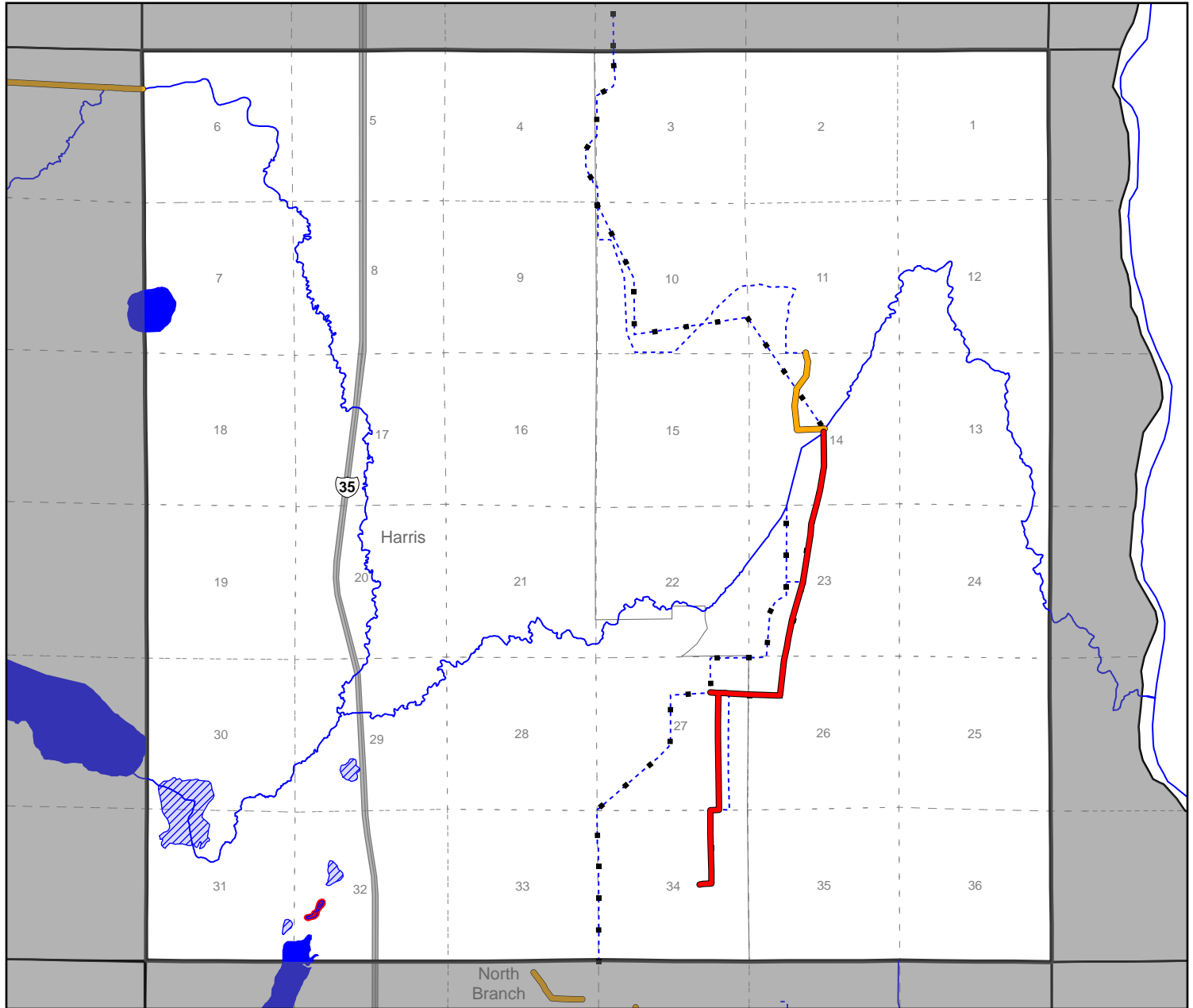
The State of Minnesota, the Minnesota Department of Natural Resources, nor their employees, make any representations or warranties, express or implied, with respect to the use of or reliance on the data provided herewith, regardless of its format or means of transmission. There are no guarantees or representations to the user as to the accuracy, currency, completeness, suitability or reliability of this data for any purpose. THE USER ACCEPTS THE DATA "AS IS" AND ASSUMES ALL RISKS ASSOCIATED WITH ITS USE. The Minnesota Department of Natural Resources assumes no responsibility for actual, consequential, incidental, special or exemplary damages resulting from caused by or associated with, any user's reliance on or use of this data, even if appraised of the likelihood of such damages occurring. All maps and other material provided herein are protected by copyright.



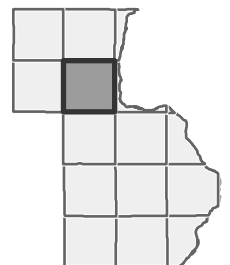
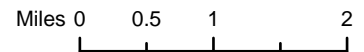
# Public Waters Inventory Preliminary Map of Corrections

# Chisago County T36 R21

Public waters are defined in Minnesota Statute 103G. The boundaries of public waters shown on this map are drawn as accurately as possible, consistent with the map scale, but are still approximate. Public ditches are only shown where they overlap with public waters.



- Public Waters Natural Watercourse
- - - Public Waters Altered Natural Watercourse
- ■ Public Ditch
- Public Waters Basin
- ▨ Public Waters Wetland
- Add (0)
- Remove (1)
- Interstate Highways
- City
- PLSS Section
- Add (2)
- Remove (1)



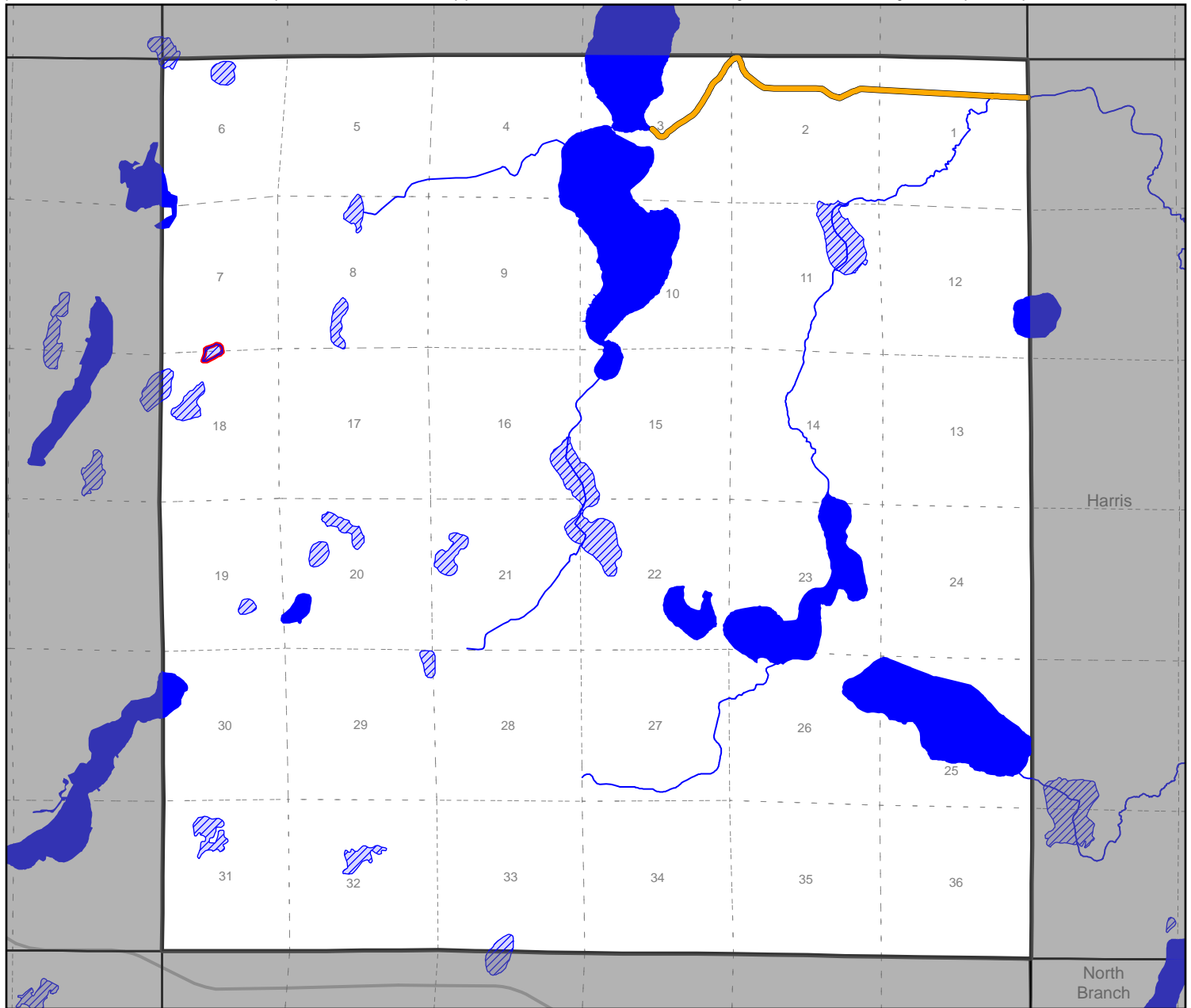
The State of Minnesota, the Minnesota Department of Natural Resources, nor their employees, make any representations or warranties, express or implied, with respect to the use of or reliance on the data provided herewith, regardless of its format or means of transmission. There are no guarantees or representations to the user as to the accuracy, currency, completeness, suitability or reliability of this data for any purpose. THE USER ACCEPTS THE DATA "AS IS" AND ASSUMES ALL RISKS ASSOCIATED WITH ITS USE. The Minnesota Department of Natural Resources assumes no responsibility for actual, consequential, incidental, special or exemplary damages resulting from caused by or associated with, any user's reliance on or use of this data, even if appraised of the likelihood of such damages occurring. All maps and other material provided herein are protected by copyright.



# Public Waters Inventory Preliminary Map of Corrections

# Chisago County T36 R22

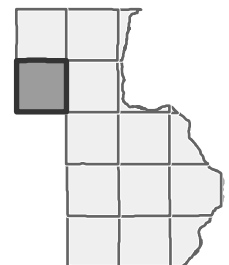
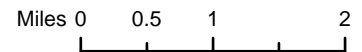
Public waters are defined in Minnesota Statute 103G. The boundaries of public waters shown on this map are drawn as accurately as possible, consistent with the map scale, but are still approximate. Public ditches are only shown where they overlap with public waters.



- Public Waters Natural Watercourse
- Public Waters Altered Natural Watercourse
- Public Ditch
- Add (1)
- Remove (0)

- Public Waters Basin
- Public Waters Wetland
- Add (0)
- Remove (1)

- MN Trunk Highways
- City
- PLSS Section



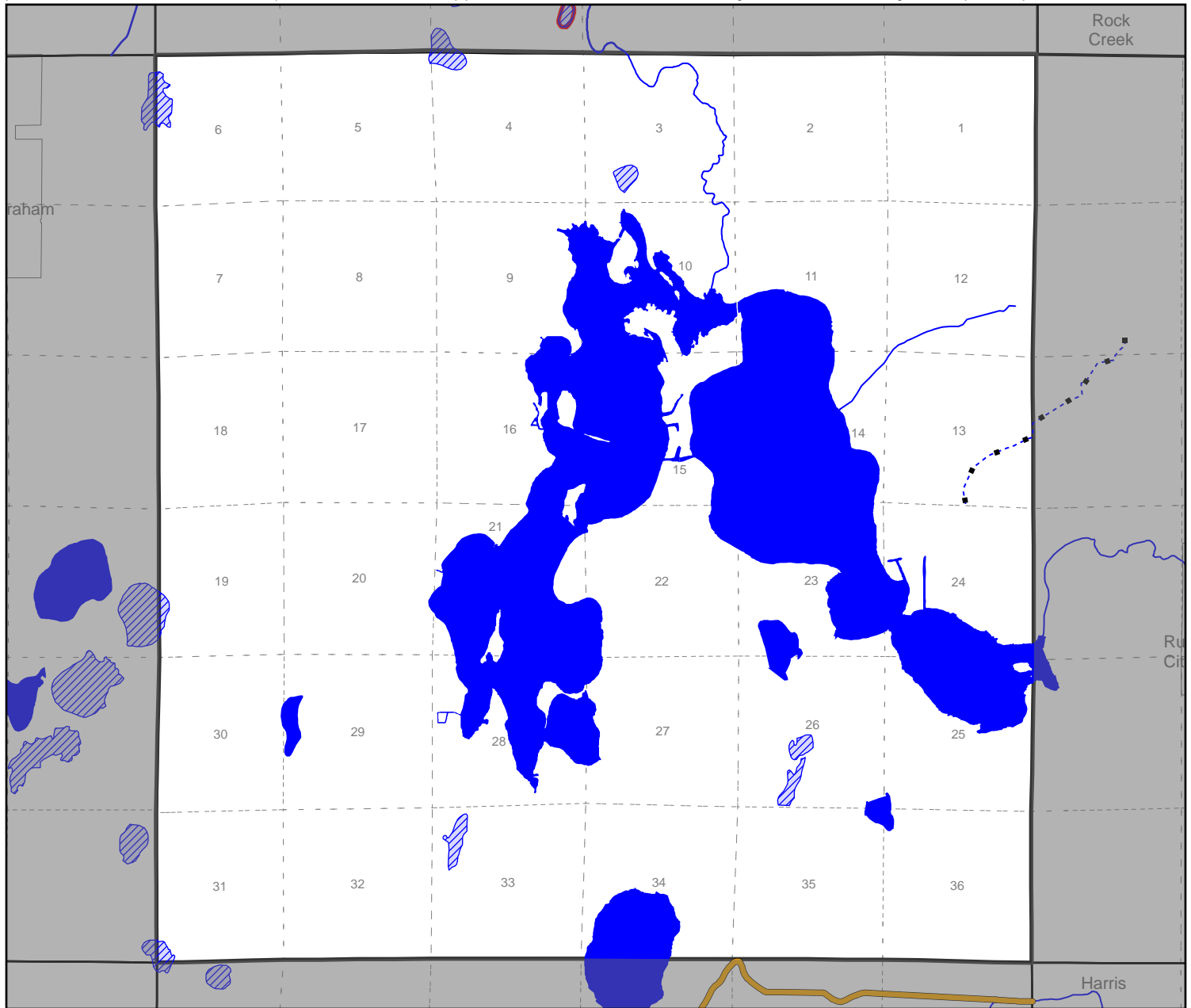
The State of Minnesota, the Minnesota Department of Natural Resources, nor their employees, make any representations or warranties, express or implied, with respect to the use of or reliance on the data provided herewith, regardless of its format or means of transmission. There are no guarantees or representations to the user as to the accuracy, currency, completeness, suitability or reliability of this data for any purpose. THE USER ACCEPTS THE DATA "AS IS" AND ASSUMES ALL RISKS ASSOCIATED WITH ITS USE. The Minnesota Department of Natural Resources assumes no responsibility for actual, consequential, incidental, special or exemplary damages resulting from caused by or associated with, any user's reliance on or use of this data, even if appraised of the likelihood of such damages occurring. All maps and other material provided herein are protected by copyright.



# Public Waters Inventory Preliminary Map of Corrections

# Chisago County T37 R22

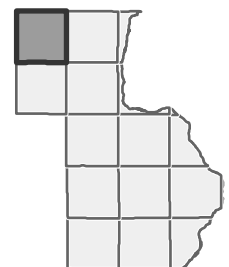
Public waters are defined in Minnesota Statute 103G. The boundaries of public waters shown on this map are drawn as accurately as possible, consistent with the map scale, but are still approximate. Public ditches are only shown where they overlap with public waters.



- Public Waters Natural Watercourse
- Public Waters Altered Natural Watercourse
- Public Ditch
- Add (1)
- Remove (0)

- Public Waters Basin
- Public Waters Wetland
- Add (0)
- Remove (0)

- City
- PLSS Section



The State of Minnesota, the Minnesota Department of Natural Resources, nor their employees, make any representations or warranties, express or implied, with respect to the use of or reliance on the data provided herewith, regardless of its format or means of transmission. There are no guarantees or representations to the user as to the accuracy, currency, completeness, suitability or reliability of this data for any purpose. THE USER ACCEPTS THE DATA "AS IS" AND ASSUMES ALL RISKS ASSOCIATED WITH ITS USE. The Minnesota Department of Natural Resources assumes no responsibility for actual, consequential, incidental, special or exemplary damages resulting from caused by or associated with, any user's reliance on or use of this data, even if appraised of the likelihood of such damages occurring. All maps and other material provided herein are protected by copyright.



# Preliminary Corrections to Public Waters Inventory

## Chisago County, Minnesota

### A. Proposed Additions as Public Waters

1. The following are natural and altered watercourses to be added.

ID	Start Point			End Point			Length (Mi)
	UTM X	UTM Y	TWN-RNG-SEC	UTM X	UTM Y	TWN-RNG-SEC	
M-050-027-000.5	521654.7	5021547.5	T:33 R:19 S:16	521720.4	5021523.9	T:33 R:19 S:16	0.05
M-050-034-001-001	505681.3	5041608.0	T:35 R:21 S:14	504962.1	5041623.1	T:35 R:21 S:14	0.64
M-050-035	497864.9	5054110.1	T:36 R:22 S:1	497864.9	5054110.1	T:36 R:22 S:1	2.91
M-050-035-004-001	505297.1	5051303.6	T:36 R:21 S:11	505500.5	5050499.9	T:36 R:21 S:14	0.71
M-050-026-002	518835.6	5016944.9	T:33 R:19 S:31	518412.5	5017156.3	T:33 R:19 S:31	0.37
M-050-028-001	523642.0	5025389.5	T:33 R:19 S:3	523428.8	5025528.5	T:33 R:19 S:3	0.20
M-050-027-001-000.7	521716.7	5021688.2	T:33 R:19 S:16	521880.7	5021984.5	T:33 R:19 S:16	0.29
M-050-027	521697.5	5020969.0	T:33 R:19 S:16	520922.7	5022176.1	T:33 R:19 S:16	1.40

M-050-034-001-001-B001-001	503882.1	5043266.8	T:35 R:21 S:3	503491.8	5044364.5	T:35 R:21 S:3	0.74
M-050-026-003	518835.6	5016944.9	T:33 R:19 S:31	519188.9	5017483.3	T:33 R:19 S:30	0.46
M-050-034-001-001-006	502924.9	5044451.7	T:35 R:21 S:4	502409.9	5044734.5	T:35 R:21 S:4	0.41
M-050-026-003-001	518990.4	5017198.2	T:33 R:19 S:31	518674.2	5017479.0	T:33 R:19 S:30	0.31
M-050-026-001	519510.4	5016131.9	T:33 R:19 S:32	519451.8	5016175.2	T:33 R:19 S:32	0.07
M-050-027-002	521149.8	5022048.3	T:33 R:19 S:16	521289.6	5022191.6	T:33 R:19 S:16	0.13
M-050-027-000.5-001	521720.4	5021523.9	T:33 R:19 S:16	521716.9	5021588.7	T:33 R:19 S:16	0.04
M-050-027-000.5	521720.4	5021523.9	T:33 R:19 S:16	522017.4	5021273.3	T:33 R:19 S:16	0.25
M-050-028-000.7	523701.6	5025282.2	T:33 R:19 S:3	523196.8	5025078.4	T:33 R:19 S:3	0.40

2. The following are basins and wetlands to be added.

(no proposed corrections)

## B. Proposed Removals as Public Waters

1. The following are natural and altered watercourses to be removed.

ID	Start Point			End Point			Length (Mi)
	UTM X	UTM Y	TWN-RNG-SEC	UTM X	UTM Y	TWN-RNG-SEC	

M-050-034-002-004-002	500928.1	5035310.1	T:35 R:21 S:32	500383.1	5036274.2	T:35 R:21 S:32	0.54
M-050-034-004	511322.2	5038753.3	T:35 R:20 S:21	512728.0	5038467.6	T:35 R:20 S:21	1.19
M-050-035-005	504370.4	5047700.2	T:36 R:21 S:34	504370.4	5047700.2	T:36 R:21 S:34	3.61

2. The following are basins and wetlands to be removed.

ID	UTM X	UTM Y	TWN-RNG-SEC	Area (ac)
13015000	498510.6	5038220.0	T:35 R:21 S:30	0.27
13014500	500095.5	5045390.0	T:36 R:21 S:32	2.12
13014300	500185.0	5027090.8	T:34 R:21 S:29	1.46
13012500	517161.4	5042604.0	T:35 R:20 S:12	3.63
13009700	521451.3	5023453.9	T:33 R:19 S:9	6.12
13011800	489480.1	5051370.2	T:36 R:22 S:18	6.06

## Active Grant Summary

Account	Lake Management District	Title and Description	Total Grant Award or Grant Request	2025	2026	Grant Period Start Date	Grant Expiration Date	Cumulative Grant Amount Spent to Date (as of 4/30/26)	Comment
		<b>ACTIVE GRANTS</b>	<b>Total Grant Award or Grant Request</b>	<b>2025 Earned Grant Revenue Yearend</b>	<b>2026 Earned Grant Revenue Est. Yearend</b>				
3-001	District-Wide	BWSR PRAP - Permitting Program Review	\$8,400	\$0	\$8,400	2/3/2026	12/31/2026	\$159	2026 initiative- staff and engineering time to review permitting program effectiveness and improve efficiency
3-004	District-Wide	MN Conservation Corps Individual Placement (900 hrs) and Crew Labor (400 hrs)	Technician and Crew for 2026 season	N/A	Technician and Crew	1/28/2026	9/30/2026	N/A	2026 initiative. Grant awarded in time/labor, not in dollars.
3-004, 3-005	District-Wide	Midwest Glacial Lakes Partnership Grant - Shoreline Restorations and Outreach	\$60,000	\$46,023	\$13,977	10/1/2024	9/30/2026	\$46,364	Shoreline projects and shoreline-related public outreach. Will be completed in 2025/2026.
3-004, 3-005	District-Wide	MPCA Local Climate Action: Shoreline Resiliency Planning - Moore Engineering	\$35,000	\$29,327	\$5,673	6/17/2025	6/30/2026	\$33,745	Complete Shoreline Resiliency Action Plan in 2026
3-005	District-Wide	No Child Left Inside Grant: Outdoor Experience Kits for Local Schools	\$5,000	N/A	\$5,000	7/1/2026	6/30/2027	\$0	2026 initiative - direct purchase cost of education kit materials.
3-006	District-Wide	LSC Mid-Point Evaluation Grant - Mid-Point Eval	\$2,310	\$0	\$2,310	12/29/2025	12/31/2026	\$2,031	Assist with Lower St. Croix 10-year plan mid-point evaluation. Potential for Phase 2 in 2027, TBD.
3-006	District-Wide	LSC WBIF Grant - Reporting and Work Planning	\$1,800	\$0	\$1,800	12/29/2025	12/31/2027	\$74	Assist with Lower St. Croix annual reporting and biennial work plan/budget. Potential to continue in 2027+
3-011	Forest LMD, Bone LMD	Washington County AIS Prevention Aid - three grants	\$18,000	\$19,884	\$18,000	3/26/2026	12/31/2026	\$0	2026 grants include Bone/Forest Watercraft Inspections (\$10,000), Forest Lk Flowering Rush (\$4,000), Forest Lake Curly-leaf Pondweed (\$4,000). Grant awards declining over time.
5-100	Comfort LMD	BWSR Water Quality & Storage Grant - Floodplain Project Modeling & Concept Design	\$99,000	\$0	\$49,500	2/26/2026	12/31/2027	\$0	Awarded in Feb 2026. Grant period begin in March/April 2026, end December 2027. Critical pre-project/project development step before applying for project construction grants.
5-224-A	Little Comfort LMD	FY24 CWF School Lake Ag BMPs	\$90,000	\$0	\$10,000	4/5/2024	12/31/2026	\$3,280	Project entails multiple BMPs. Roof runoff management completed in 2024. Remaining feedlot and ag field BMPs must be completed by end of 2026, pending landowner cooperation.
5-225-C	Little Comfort LMD	FY25 CWF Heath Ave Iron Enhanced Sand Filter	\$1,499,000	\$21,825	\$1,349,100	2/18/2025	12/31/2027	\$52,071	Project to be completed in 2025-2027. Grant expires 12/31/27. Aiming to time construction so that CWF match can be covered by Section 319 grant.
5-229-A	Comfort LMD	FY25 CWF Accelerated Implementation Grant - Sunrise River Headwaters Project Development	\$118,000	\$10,640	\$59,000	2/18/2025	12/31/2027	\$16,709	Project to be completed in 2025-2027. Grant expires 12/31/27.
5-229-B	Comfort LMD	FY25 BWSR Green Infrastructure Projects: East Comfort Pond	\$225,800	\$715	\$50,000	6/9/2025	12/31/2027	\$4,741	Grant amended to accommodate project location change per landowner agreements. Complete project by December 31, 2027.
6-000-F	Bone LMD	Conservation Partners Legacy Bone Lake South Wetland Acquisition (and fencing)	\$500,000	\$424,119	\$75,881	7/14/2025	6/30/2026	\$451,260	Grant period ends 6/30/26. Majority used on property acquisition in 2025. Utilize remaining grant balance for fencing on acquired property in 2026.
Multiple	Multiple	Grants Closed out in 2025		\$2,321,126					
		<b>ACTIVE GRANTS</b>	<b>\$2,662,310</b>	<b>\$2,873,659</b>	<b>\$1,648,641</b>			<b>\$610,435</b>	

## Pending and In Progress Grant Summary

Account	Lake Management District	Title and Description	Total Grant Award or Grant Request	2025	2026	Grant Period Start Date	Grant Expiration Date	Cumulative Grant Amount Spent to Date (as of 4/30/26)	Comment
		<b>GRANT APPLICATIONS PENDING</b>		<b>2025 Earned Grant Revenue Yearend</b>	<b>2026 Earned Grant Revenue Est. Yearend</b>				
Various	District-Wide	Section 319 Small Watersheds Focus	\$279,583	N/A	Likely in FY27	estimated 1/1/2027	6/30/2030	\$0	Slated to receive next 4-yr installment of federal grant funds in Dec 2026/Jan 2027. Can be used to cover the match portion for state grants, as well as new projects and program work.
3-004, 3-005	District-Wide	Fishers & Farmers Partnership: Farmer-Led Council Support and Best Management Practices	\$80,000	N/A	TBD	estimated 7/1/2026	6/30/2028	\$0	Apply in January 2025, preliminary decision in March 2025, final award in March 2026 (after goes through federal grant review process)
3-006	Comfort LMD, Forest LMD	MPCA Clean Sweep Program: Free street sweeping materials testing - apply for Forest Lake and Wyoming	Free testing	N/A	N/A	estimated fall 2026	N/A	\$0	New grant program for the CLFLWD. MPCA offers new grant program to provide free testing of street sweeping materials to identify harmful pollutants like phosphorus, metals, and hydrocarbons. Results can be used to document pollutant removal and compare to calculator/model estimates.
5-222-D	Bone LMD	Bone Lake Northeast Agricultural Practices	\$30,000	N/A	TBD	7/1/2026	12/31/2029	\$0	Apply in March 2026, funds available in July 2026 if awarded
5-229-H	Comfort LMD	Broadway Iron Enhanced Sand Filter Replacement Project	\$599,000	N/A	TBD	7/1/2026	12/31/2029	\$0	Apply in March 2026, funds available in July 2026 if awarded
5-420-C	Bone LMD	Lessard-Sams Outdoor Heritage Fund: Bone Lake South Phase 2 (Restoration)	\$1,432,000	N/A	\$50,000	7/1/2026	6/30/2031	\$0	Apply in May 2025, funds available July 2026 if awarded. Pending allocation: \$1,432,000 FY27: \$30K for CLFLWD staff, \$100K for contracts/professional services
6-000-I	Comfort LMD	Lessard-Sams Outdoor Heritage Fund: Greenbelt Phase 1 (Easements & Acquisitions)	\$1,467,000	N/A	\$25,000	7/1/2026	6/30/2030	\$0	Apply in May 2025, funds available July 2026 if awarded. Pending allocation: \$1,467,000
		<b>GRANT APPLICATIONS IN PROGRESS OR PENDING</b>	<b>\$3,887,583</b>		<b>\$75,000</b>			<b>\$0</b>	
		<b>GRANT APPLICATIONS IN PROGRESS</b>		<b>2025 Earned Grant Revenue Yearend</b>	<b>2026 Earned Grant Revenue Est. Yearend</b>				
Various	District-Wide	St. Croix Valley Foundation: General Operating Support for Education & Outreach	\$25,000	N/A	TBD	8/1/2026	8/1/2027	\$0	New grant program for the CLFLWD. Max \$25,000 grant request for general operating support. Grant applications due in mid-June.
3-003	Forest LMD, Bone LMD	Bush Foundation: Sequential Diagnostic Assessment Process Testing, Deployment, Spreading	TBD, \$500,000-\$1 million	N/A	FY27	estimated 1/1/2027	12/31/2031	\$0	New grant program for the CLFLWD. Brought to March 26, 2026 regular board meeting for application approval. Application development in progress with partners and EOR.
3-004	TBD	MDA AGRI grants (ag demonstration and partners grants) - TBD work with Farmer Led Council	TBD	N/A	TBD	TBD	TBD	\$0	New grant program for the CLFLWD. Multiple AGRI programs available. Staff is reviewing possibilities with partners and farmer-led council.
3-004	TBD	WCD Buffer Grant - TBD	TBD ~\$15,000 thru WCD	N/A	N/A - WCD funds work	TBD	TBD	\$0	Discussing partnership with Washington Conservation District.
3-005	Comfort LMD, Forest LMD, Bone LMD	National Fish and Wildlife Foundation (NFWF) Five Star Grant: Outreach and shoreline restoration projects	\$100,000	N/A	Likely in FY27	estimated 1/1/2027	6/30/2028	\$0	New grant program for the CLFLWD. Brought to April 23, 2026 regular board meeting for application approval.
3-006	District-Wide	Esri Conservation Grant: Significantly discounted rates for three ArcGIS licenses (total \$11,400 discounted to \$300)	Discounted GIS = \$11K in savings	N/A	N/A	annually recurring	N/A	\$0	CLFLWD has been using this program for several years to obtain ArcGIS licenses for District staff use. The discounted rate is significant, and the District would have difficulty affording GIS licenses without it.
6-000	TBD	BWSR Managing Invasives for a Resilient Landscape Program - TBD work on District properties	TBD up to \$30,000	N/A	TBD	November 2026	December 2029	\$0	New grant program for the CLFLWD.
6-000	Comfort LMD	Great River Greening - support GRG proposal to Lessard-Sams OHF	TBD funds thru GRG	N/A	TBD funds thru GRG	7/1/2027	6/30/2032	\$0	Partner with GRG to fund land management and restoration/enhancement work on CLFLWD properties. Funds handled by GRG.
		<b>GRANT APPLICATIONS IN PROGRESS</b>	<b>TBD \$1 million+</b>					<b>\$0</b>	