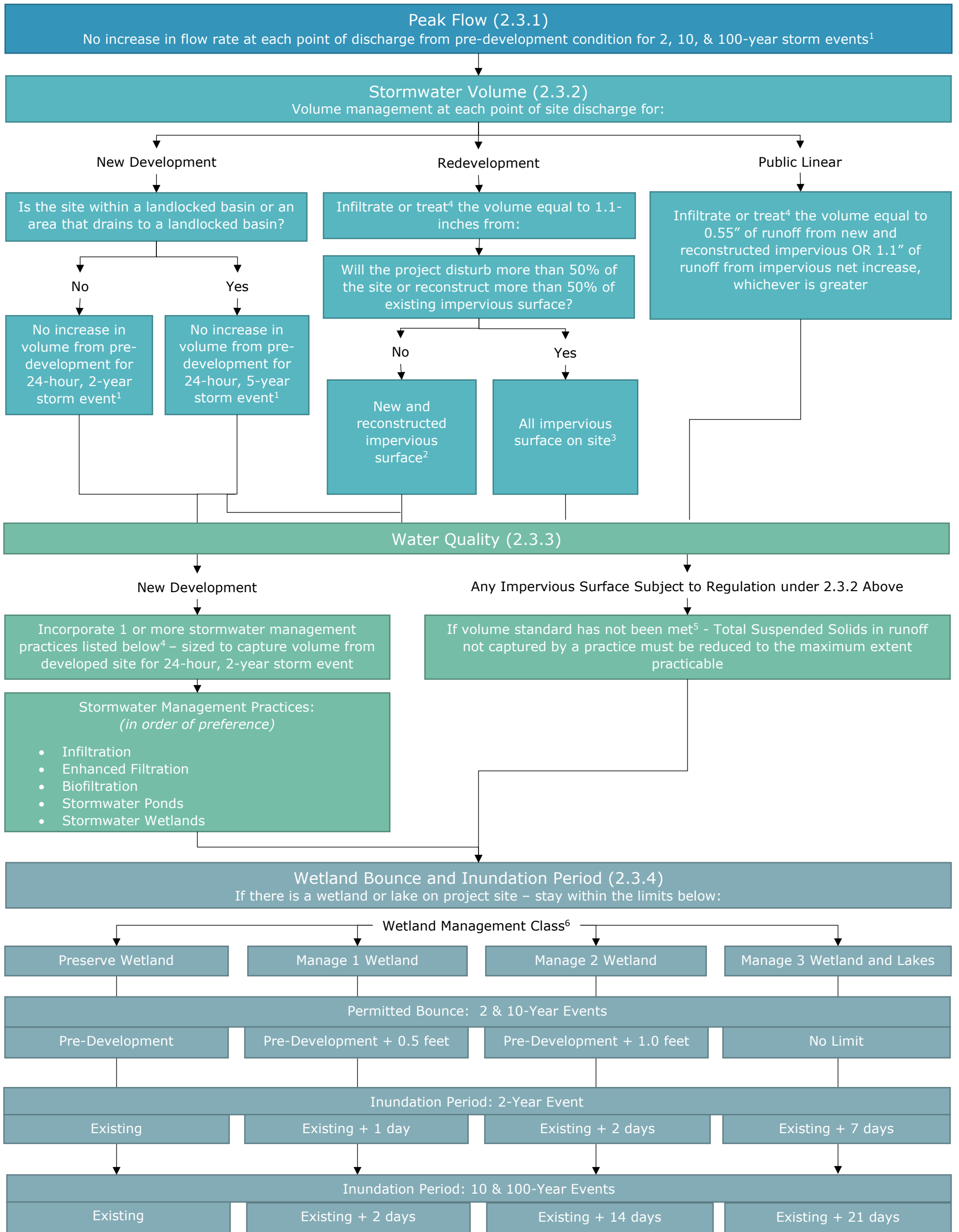


# Comfort Lake-Forest Lake Watershed District (CLFLWD) Stormwater Rule (2.0) Standards Flowchart



**FOOTNOTES:**

This flowchart contains the District's Stormwater Standards that most affect BMP Design to provide an initial reference for applicants. It does not contain all the requirements of the Stormwater Rule and applicants will need to refer to a complete set of the District Rules to ensure adherence to the Stormwater Rule in its entirety.

1. Pre-Development conditions are calculated in accordance with subsection 2.3.10 of the District Rules.
2. Volume is calculated per the formula provided in subparagraph 2.3.2(b)(ii) of the District Rules.
3. Volume is calculated per the formula provided in subparagraph 2.3.2(b)(i) of the District Rules.
4. If treatment mechanism does not reduce runoff volume, refer to the volume conversion factors that can be found in Table 2.3.2 of the District Rules.
5. Applies if volume standard has not been met by the application of paragraphs 2.3.2(e) and (f) of the District Rules.
6. Wetland Management Classes are determined by the Minnesota Routine Assessment Method (MnRAM) and are further explained in the Definitions section of the District Rules.