

KEEWAHTIN LAKE

Fast Facts:

DNR Lake ID: 82-0080-00

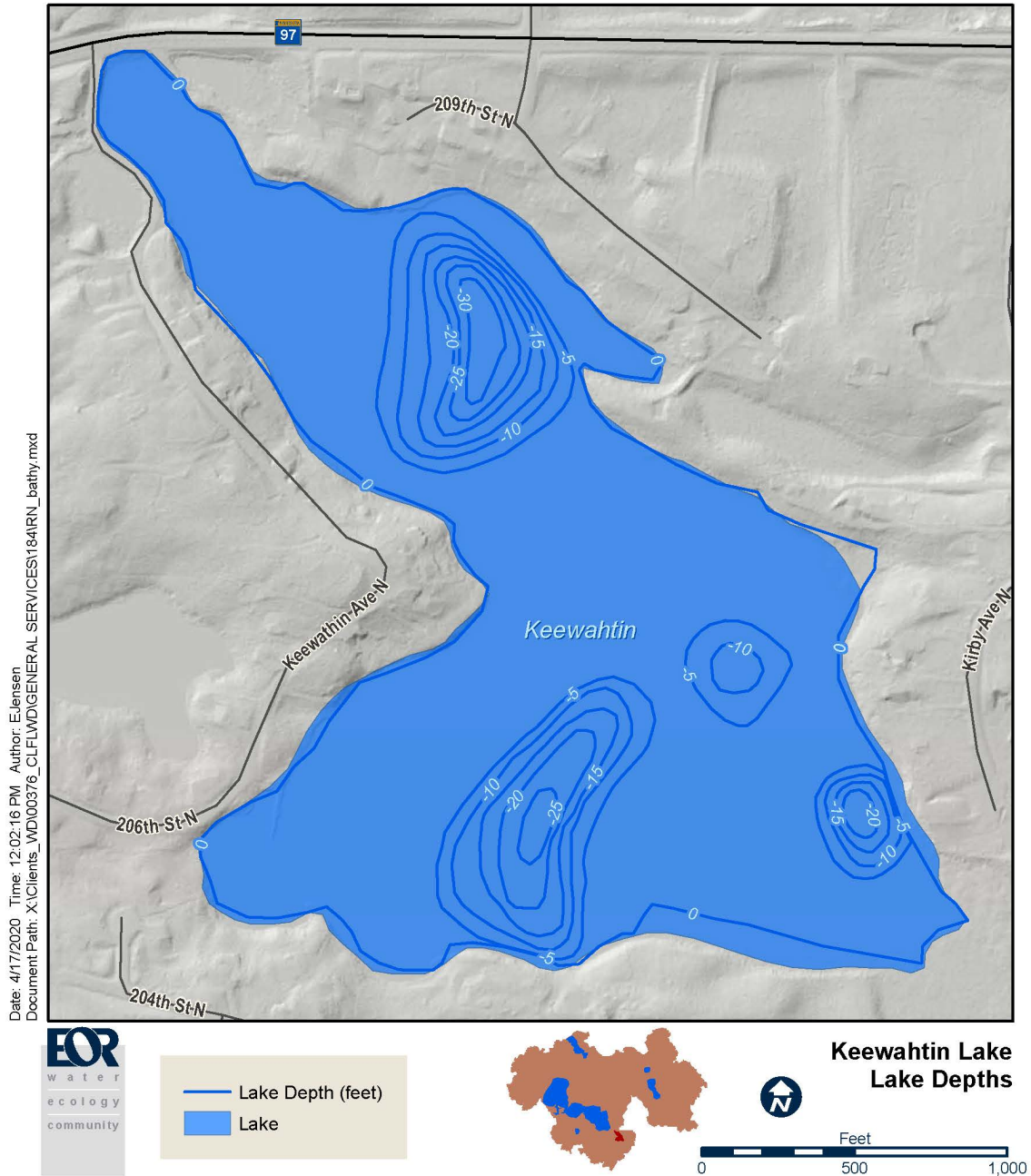
County: Washington

Surface Area: 92 acres

Littoral Area (depths less than 15 feet): 67 acres

Maximum Depth: 34 feet

Shore Length: 2.2 miles



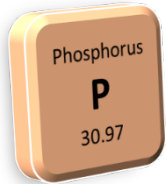
KEEWAHTIN LAKE

2020 Surface Water Quality Summary

Nutrients:

June-Sept. Average Total Phosphorus (TP, $\mu\text{g/L}$)

17 $\mu\text{g/L}$



Algae:

June-Sept. Average Chlorophyll-a (Chl-a, $\mu\text{g/L}$)

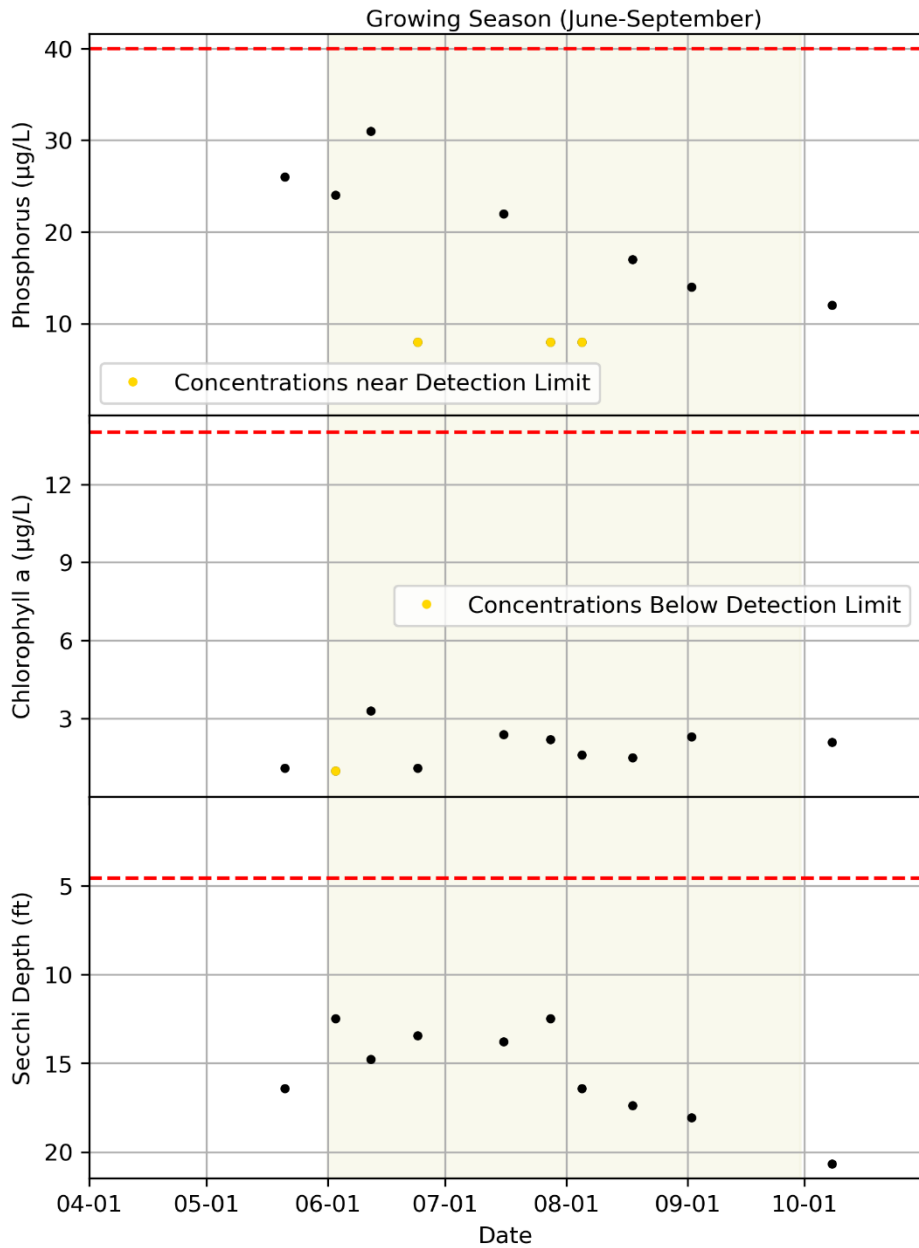
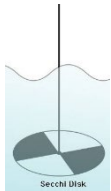
2 $\mu\text{g/L}$



Clarity:

June-Sept. Average Secchi Depth (Secchi, ft)

15 feet



State standard are shown with a dashed red line. Phosphorus = 40 $\mu\text{g/L}$, Chlorophyll-a = 14 $\mu\text{g/L}$, Secchi Depth = 4.6 feet. Sample points are shown in black dots. Points above the line are worse than the State standard. Points below the line are better than the State standard.

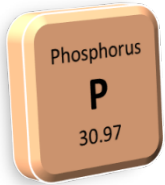
KEWAHTIN LAKE

Historical Water Quality Summary

| | Phosphorus ($\mu\text{g/L}$) | Chl-a ($\mu\text{g/L}$) | Secchi (feet) |
|------------------------------------|--------------------------------|---------------------------|---------------|
| State Standard | < 40 | < 14 | > 4.6 |
| 10-year Average (2011-2020) | 15 | 3 | 15 |
| 2040 District Goal | < 20 | n/a | > 10 |
| 5-year Average (2016-2020) | 15 | 3 | 14 |

Nutrients:

June-Sept. Average
Total Phosphorus
(TP, $\mu\text{g/L}$)



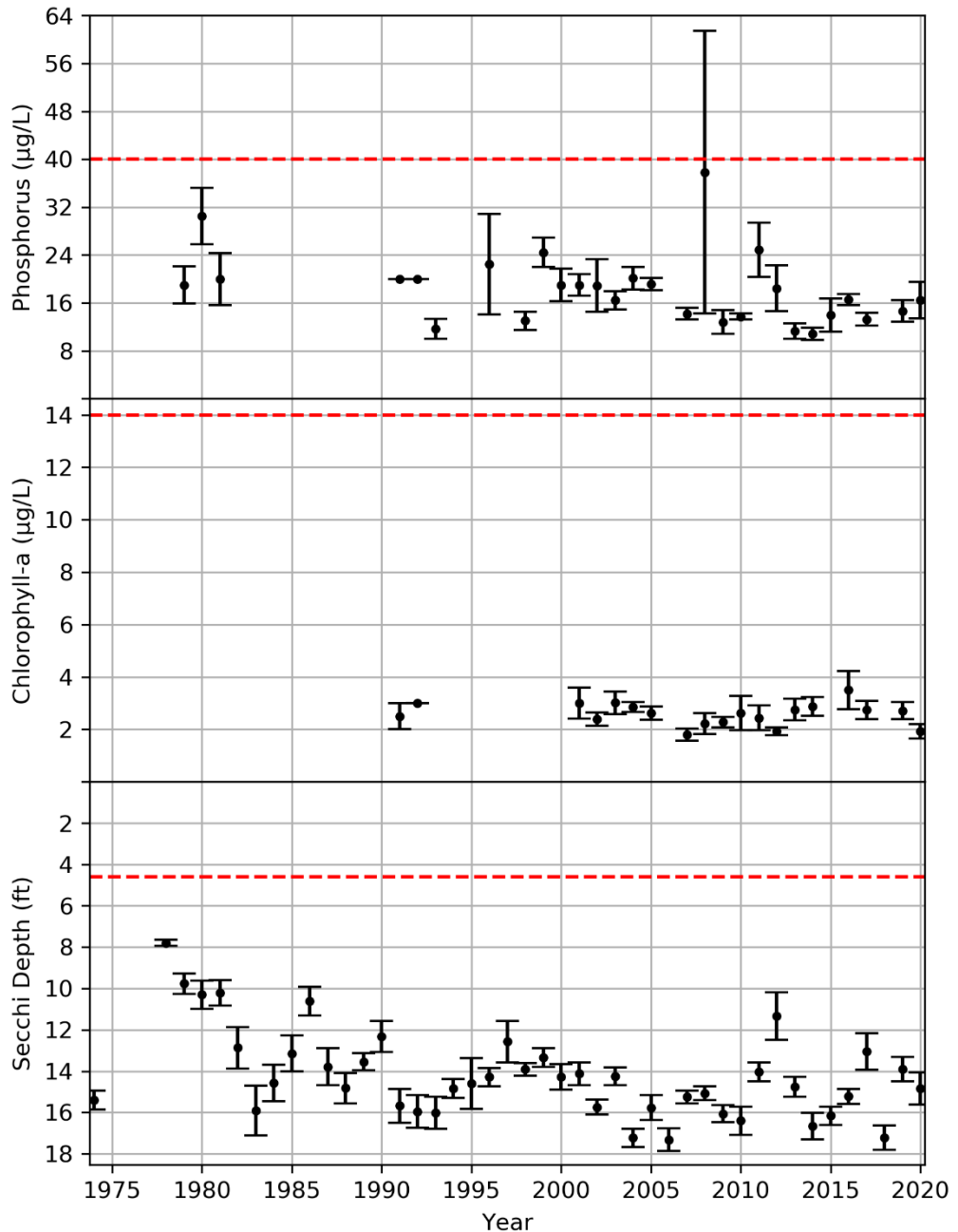
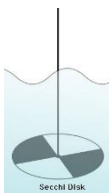
Algae:

June-Sept. Average
Chlorophyll-a
(Chl-a, $\mu\text{g/L}$)



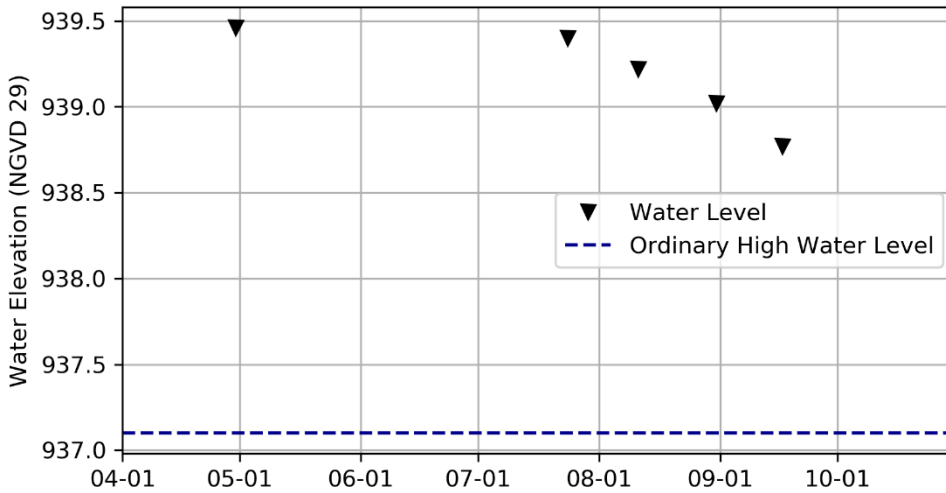
Clarity:

June-Sept. Average
Secchi Depth
(Secchi, ft)



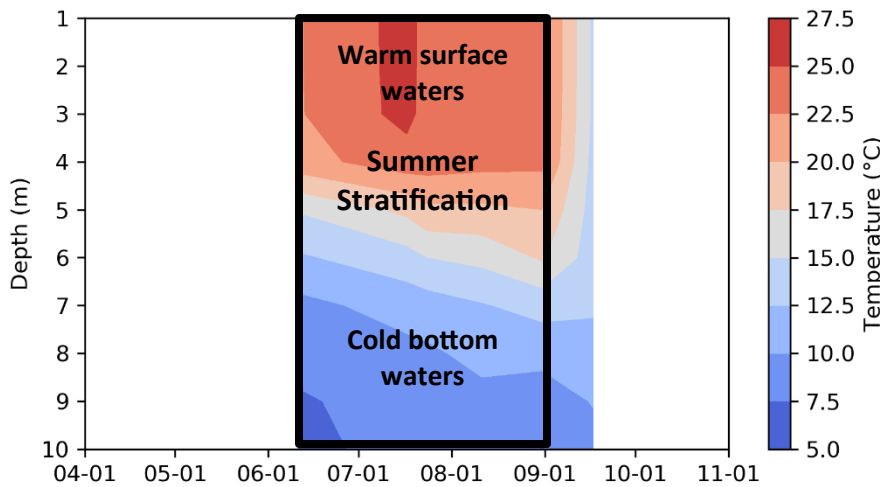
State standard are shown with a dashed red line: Phosphorus = 40 $\mu\text{g/L}$, Chlorophyll-a = 14 $\mu\text{g/L}$, Secchi Depth = 4.6 feet. Growing season averages are shown as black points. Points above the line are worse than the State standard. Points below the line are better than the State standard.

KEEWAHTIN LAKE



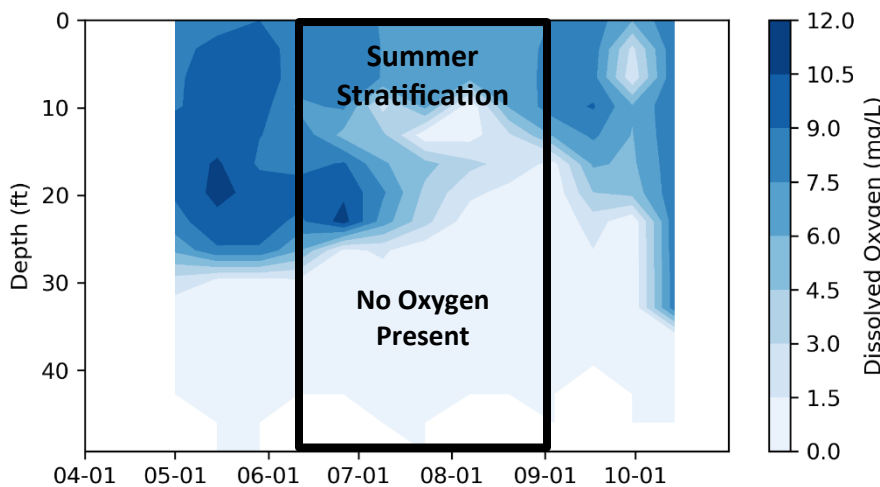
2020 Lake Levels

Lake levels ranged over a total of 0.72 feet; between a minimum of 938.74 feet on Sept. 17, 2020 and a maximum of 939.46 feet on April 30, 2020. The water levels were above the Ordinary High Water level during 2020.



2020 Temperature Profiles

The lake was stratified from mid-June until September.



2020 Dissolved Oxygen Profiles

Grey represents the duration and depths where no oxygen is present and sediment phosphorus can be released and contribute to internal loading.

Internal loading was possible throughout the growing season.