

Curlyleaf Pondweed Growth Characteristics

(source: Steve McComas, Blue Water Science, unpublished)

Light Growth Conditions

Plants rarely reach the surface.

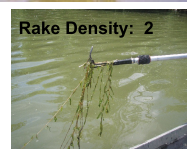
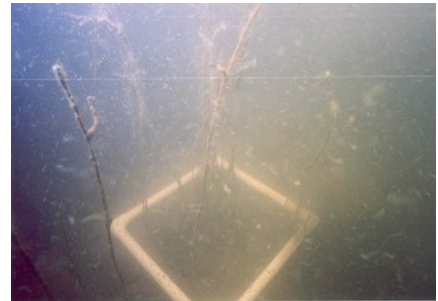
Navigation and recreational activities are not generally hindered.

Stem density: 0 - 160 stems/m²

Biomass: 0 - 50 g-dry wt/m²

Estimated TP loading: <1.7 lbs/ac

MnDNR rake sample density equivalent for light growth conditions: 1, 2, or 3.



Moderate Growth Conditions

Broken surface canopy conditions.

Navigation and recreational activities may be hindered.

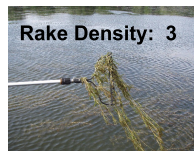
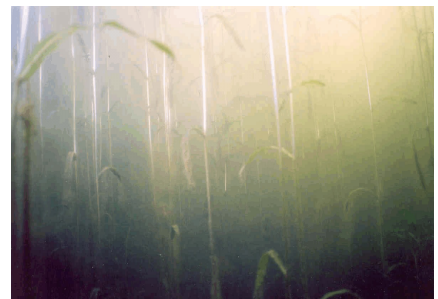
Lake users may opt for control.

Stem density: 100 - 280 stems/m²

Biomass: 50 - 85 g-dry wt/m²

Estimated TP loading: 2.2 - 3.8 lbs/ac

MnDNR rake sample density equivalent for moderate growth conditions: 2, 3 or sometimes, 4.



Heavy Growth Conditions

Solid or near solid surface canopy conditions.

Navigation and recreational activities are severely limited.

Control is necessary for navigation and/or recreation.

Stem density: 400+ stems/m²

Biomass: >300 g-dry wt/m²

Estimated TP loading: >6.7 lbs/ac

MnDNR rake sample density has a scale from 1 to 4. For certain growth conditions where plants top out at the surface, the scale has been extended: 4.5 is equivalent to a near solid surface canopy and a 5 is equivalent to a solid surface canopy. Heavy growth conditions have rake densities of a 4 (early to mid-season with the potential to reach the surface), 4.5, or 5.

