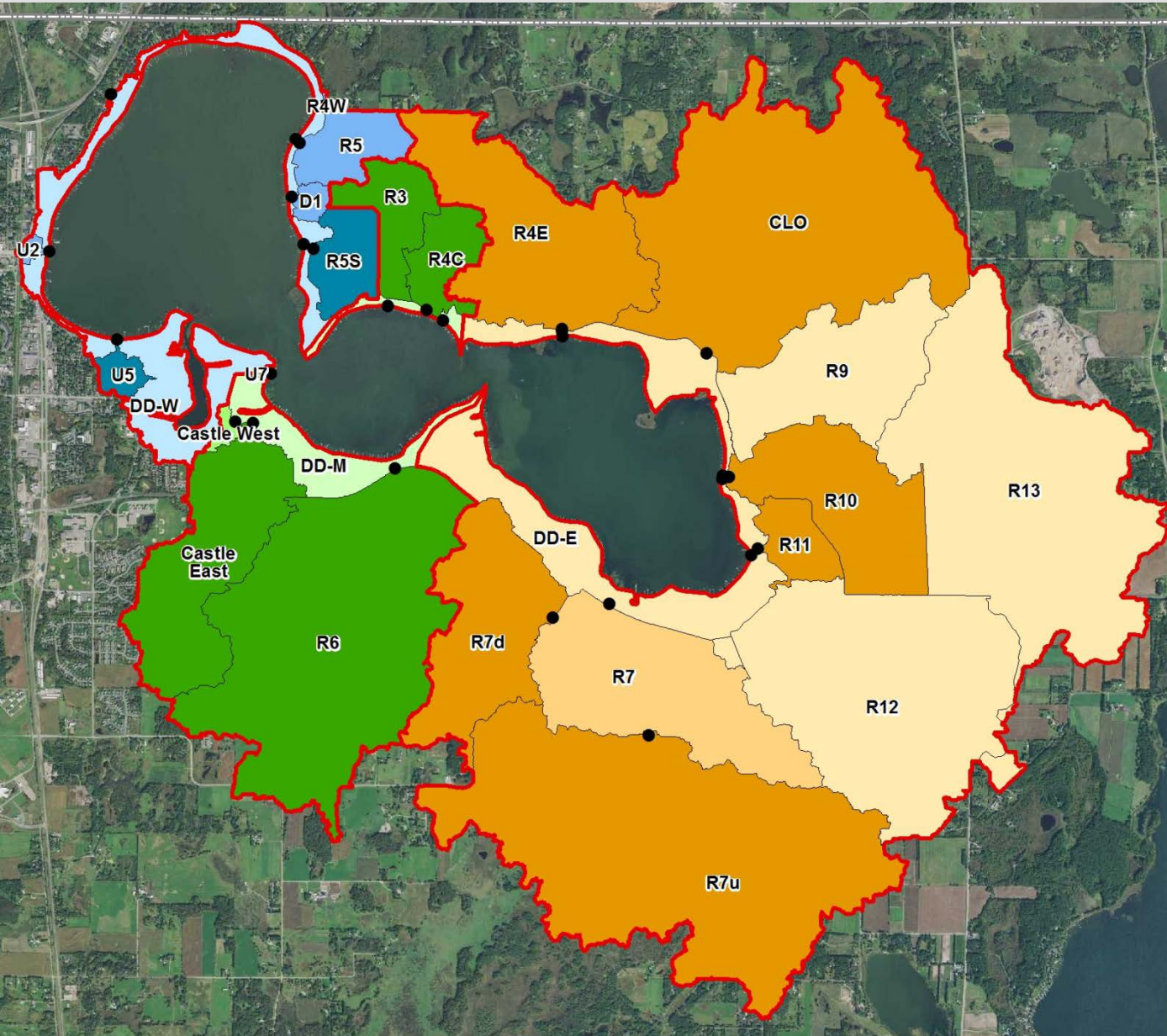


Tasks Completed:

- **2015 Oct.: Tech team meeting (Oct 2015)**
- **2015 Oct./Nov.: Citizen stormwater outfall survey**
- **2015 Dec.: Monitoring site field reconnaissance**
- **2016 Jan.: Compiled potential monitoring sites**
- **2016 Jan.: Prioritized WCD Stormwater Retrofit projects**
- **2016 Feb.: Finalized 2016 monitoring plan**
- **2016 Oct.: Completed 2016 monitoring**
- **2016 Nov./Dec.: Developed rating curves, computed continuous flow records, and modeled TP and TSS loads in FLUX**

Presenting the preliminary 2016 loads...

2016 Subwatershed Monitoring



West (761 ac)

- Load: 18%
- Conc: 35%
- None: 47%

Middle (1,841 ac)

- Load: 91%
- Conc: <1%
- None: 9%

East (7,005 ac)

- Load: 54%
- Conc: 7%
- None: 39%

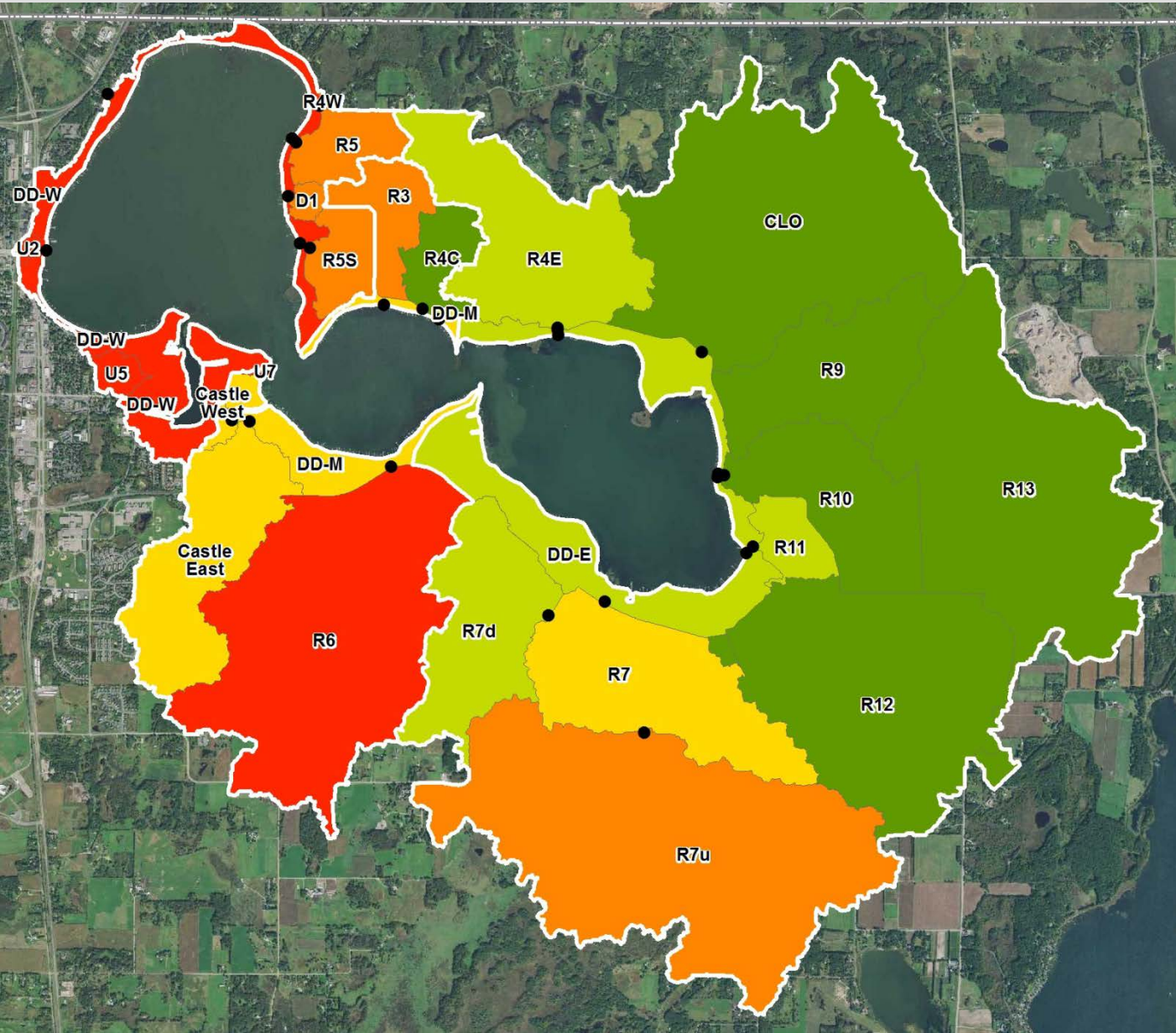
Total Watershed

Load: 58%

2016 TP Yields (lb/ac-yr)

0.01-0.12
0.13-0.24
0.25-0.36

0.37-0.48
0.49-0.66



West (761 ac)

CIP = 764 lb

2016 = 386 lb

Middle (1,841 ac)

CIP = 454 lb

2016 = 936 lb

East (7,005 ac)

CIP = 1,301 lb

2016 = 1,257 lb

Priority Subsheds

R6 = 27% total

R7u = 20% total

Urban-W = 9% total

D1-R5 = 6% total

R7 = 6% total

Next Steps:

- **2016 Dec.: Further refinement of watershed loads as part of lake model update**
- **2017 Jan./Feb.: Identify projects in priority subsheds**
- **2017 March: Implementation Plan TAC Meeting**
- **2017 June: Final Implementation Plan**
- **2017 July: Grant Writing**